

**INDEX - THREE  $\Phi$  CONSTRUCTION CROSSARM**

DWG NO.	TITLE	REV DATE
0903	THREE $\Phi$ POLE - DEADEND	03/13/19
0904	THREE $\Phi$ POLE 0°-20°	03/13/19
0905	THREE $\Phi$ POLE 21°-60°	03/13/19
0906	THREE $\Phi$ POLE 61°-90°	03/27/19
0907	THREE $\Phi$ POLE DOUBLE DEADEND	03/13/19
0908	THREE $\Phi$ POLE WITH SINGLE $\Phi$ TAP	03/13/19
0909	THREE $\Phi$ POLE WITH THREE $\Phi$ TAP	03/13/19
0910	THREE $\Phi$ POLE WITH TRANSFORMER & SECONDARY	03/13/19
0911	THREE $\Phi$ POLE WITH TRANSFORMER BANK	03/13/19
0912	THREE $\Phi$ TO ONE $\Phi$ DOUBLE DEADEND POLE	03/13/19
0913	THREE $\Phi$ POLE WITH ALLEY ARM	03/13/19

BURLINGTON ELECTRIC DEPT.

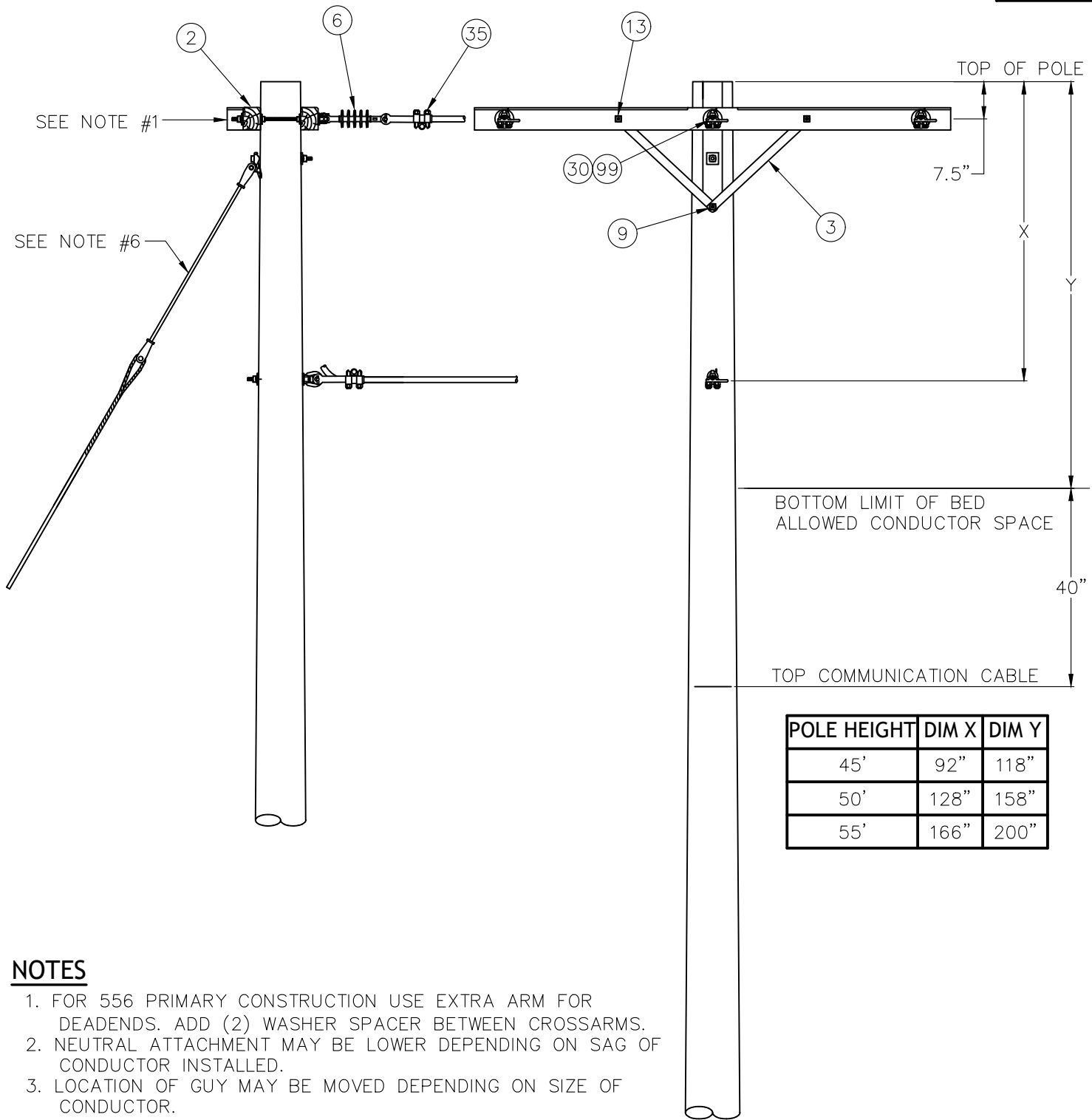
DISTRIBUTION STANDARDS

THREE  $\Phi$  CONSTRUCTION  
CROSSARM

DATE: 03/27/19 DWG. NO.: 090001

DWN BY: RG APP. BY:

SCALE: NONE SHEET 1 OF 1



POLE HEIGHT	DIM X	DIM Y
45'	92"	118"
50'	128"	158"
55'	166"	200"

**NOTES**

1. FOR 556 PRIMARY CONSTRUCTION USE EXTRA ARM FOR DEADENDS. ADD (2) WASHER SPACER BETWEEN CROSSARMS.
2. NEUTRAL ATTACHMENT MAY BE LOWER DEPENDING ON SAG OF CONDUCTOR INSTALLED.
3. LOCATION OF GUY MAY BE MOVED DEPENDING ON SIZE OF CONDUCTOR.
4. STREET LIGHT MAY BE MOUNTED WITHIN 12" OF COMMUNICATIONS/FIRE ALARM AS LONG AS STREET LIGHT IS GROUNDED.
5. ALL NEW POLES SET FOR PRIMARY CONSTRUCTION SHALL BE 45' MINIMUM.
6. GUY WIRE SHOWN FOR LOCATION ONLY. SEE SECTION 0600 FOR GUYING INFORMATION.

**BURLINGTON ELECTRIC DEPT.**  
**DISTRIBUTION STANDARDS**  
**THREE Ø POLE**  
**DEADEND**

DATE: 03/13/19	DWG. NO.: 090301
DWN BY: RG	APP. BY:
SCALE: NONE	SHEET 1 OF 1

MATERIAL LIST

<u>ITEM</u>	<u>QUANTITY</u>	<u>DESCRIPTION</u>	<u>STOCK CODE</u>		
2	2	CROSSARM, 8 FOOT	PLH	XAW	00030
3	4	CROSSARM BRACE - 28" STEEL	PLH	BRS	00010
6	3	SUSPENSION INSULATOR	PLH	IND	00010
9	2	1/2" LAG BOLT & SPRING WASHER	-	GENERAL	STOCK
13	4	3/8" CARRIAGE BOLT COMBO	-	GENERAL	STOCK
14	2	5/8" MACHINE BOLT COMBO	-	GENERAL	STOCK
30	4	EYE NUT	-	GENERAL	STOCK
35	4	DEADEND CLAMP - #6 TO 2/0	CLA	DEA	00010
		DEADEND CLAMP - #4 TO 556 KCMIL	CLA	DEA	00050
99	3	5/8" DOUBLE ARMING BOLT COMBO	-	GENERAL	STOCK

BURLINGTON ELECTRIC DEPT.

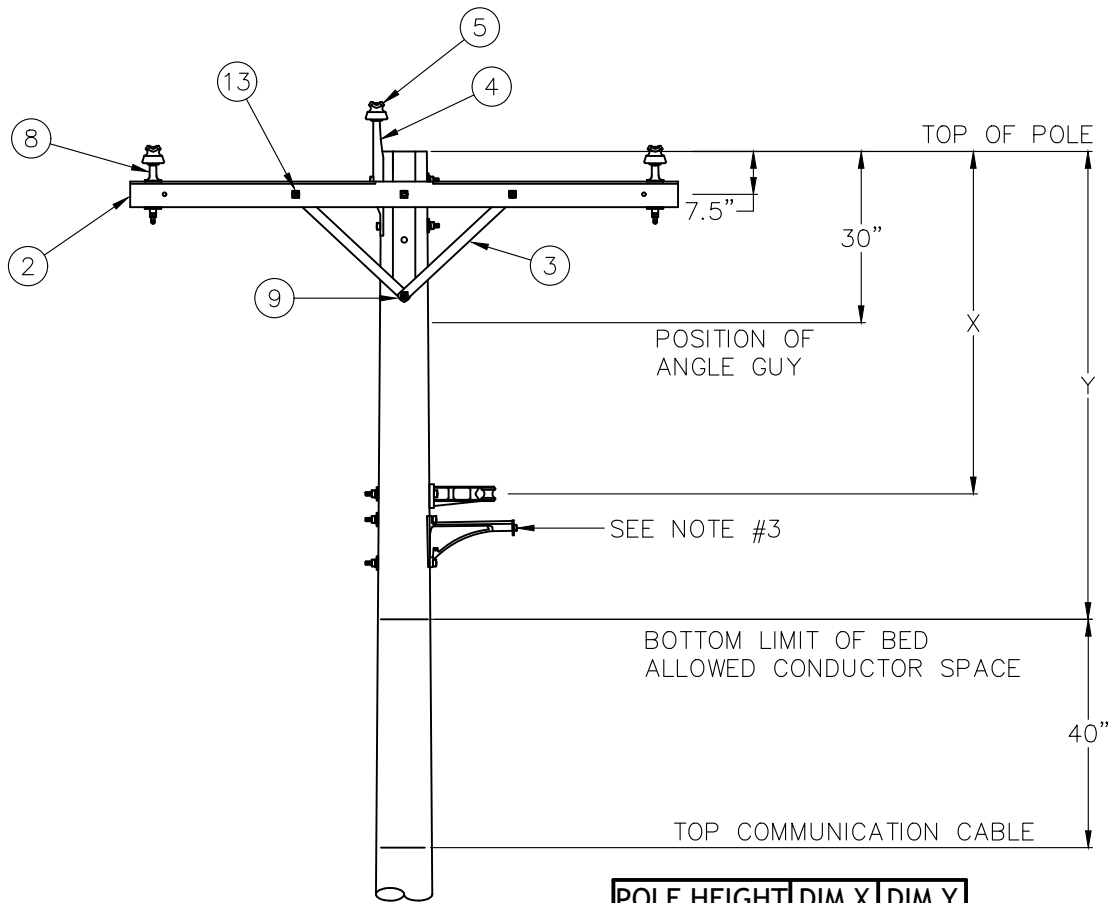
DISTRIBUTION STANDARDS

THREE  $\Phi$  POLE - DEADEND

DATE: 03/13/19 DWG. NO.: 090302

DWN BY: RG APP. BY:

SCALE: NONE SHEET 2 OF 2



POLE HEIGHT	DIM X	DIM Y
45'	92"	118"
50'	128"	158"
55'	166"	200"

**NOTES**

1. NEUTRAL ATTACHMENT MAY BE LOWER DEPENDING ON SAG OF CONDUCTOR INSTALLED.
2. IF GUY IS USED, LOCATION OF GUY MAY BE MOVED DEPENDING ON SIZE OF CONDUCTOR.
3. HENDRIX BRACKET (ITEM 22) USED ONLY WITH ATTACHED SECONDARIES.
4. STREET LIGHT MAY BE MOUNTED WITHIN 12" OF COMMUNICATIONS/FIRE ALARM AS LONG AS STREET LIGHT IS GROUNDED.
5. ALL NEW POLES SET FOR PRIMARY CONSTRUCTION SHALL BE 45' MINIMUM.

<b>BURLINGTON ELECTRIC DEPT.</b>	
<b>DISTRIBUTION STANDARDS</b>	
<b>THREE Ø POLE</b>	
<b>0° - 20°</b>	
DATE: 03/13/19	DWG. NO.: 090401
DWN BY: RG	APP. BY:
SCALE: NONE	SHEET 1 OF 1

0904

MATERIAL LIST

<u>ITEM</u>	<u>QUANTITY</u>	<u>DESCRIPTION</u>	<u>STOCK CODE</u>		
2	1	CROSSARM, 8 FOOT	PLH	XAW	00030
3	2	CROSSARM BRACE - 28" STEEL	PLH	BRS	00010
4	1	POLE TOP PIN, 20"	PLH	PIN	00010
5	3	PIN (SADDLE BACK) INSULATOR	PLH	INP	00010
8	2	CROSSARM PIN, 6"	-	GENERAL	STOCK
9	1	1/2" LAG BOLT & SPRING WASHER	-	GENERAL	STOCK
10	1	NEUTRAL BRACKET	PLH	BKT	00160
11	1	SPOOL INSULATOR	PLH	INL	00020
13	2	3/8" CARRIAGE BOLT COMBO	-	GENERAL	STOCK
14	4	5/8" MACHINE BOLT COMBO	-	GENERAL	STOCK

OPTIONAL EQUIPMENT

<u>ITEM</u>	<u>QUANTITY</u>	<u>DESCRIPTION</u>	<u>STOCK CODE</u>		
22	1	HENDRIX BRACKET	PLH	HDX	00100
29	1	EYELET	-	GENERAL	STOCK

BURLINGTON ELECTRIC DEPT.

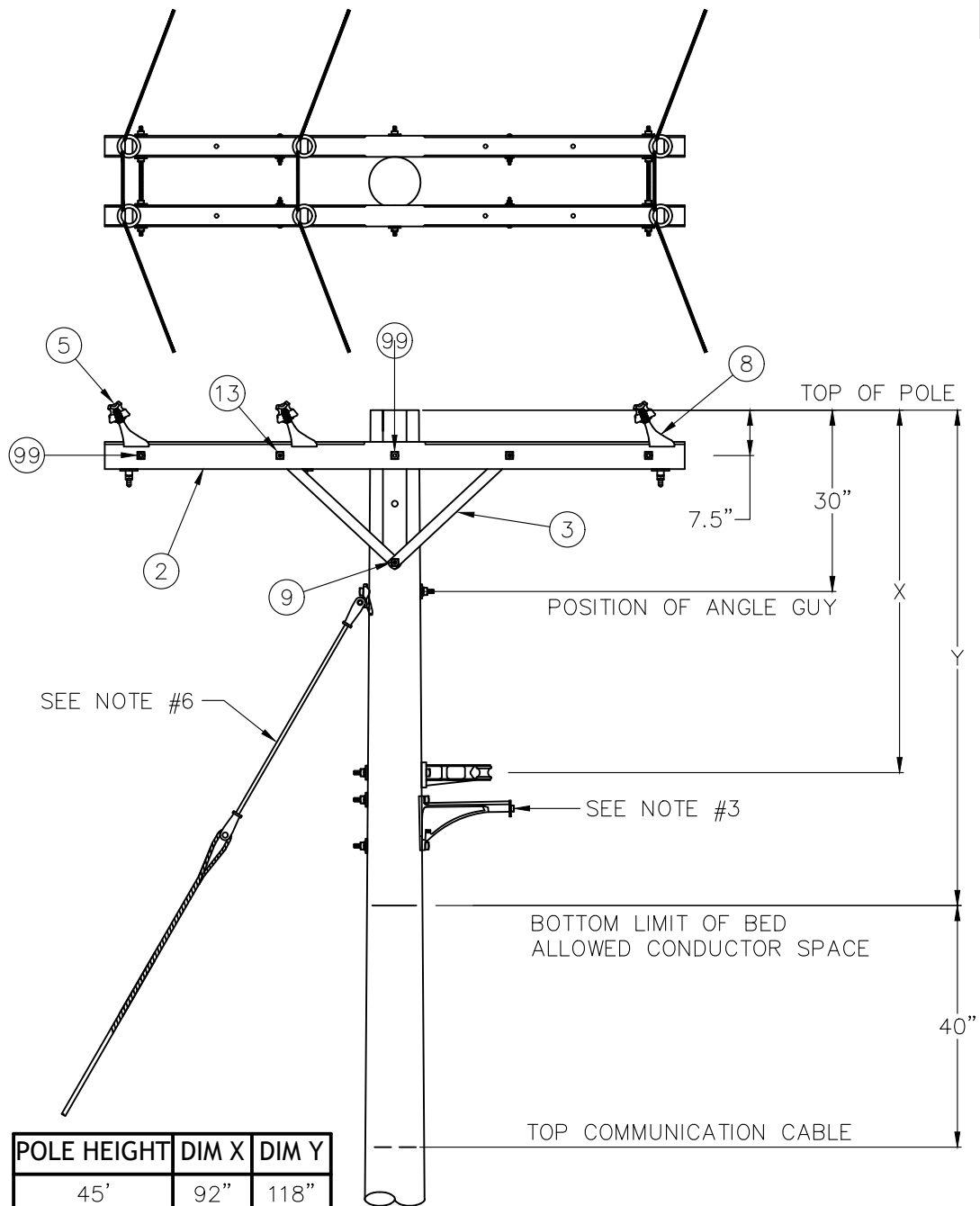
DISTRIBUTION STANDARDS

THREE  $\Phi$  POLE 0°-20°

DATE: 03/13/19 DWG. NO.: 090402

DWN BY: RG APP. BY:

SCALE: NONE SHEET 2 OF 2



**NOTES**

1. NEUTRAL ATTACHMENT MAY BE LOWER DEPENDING ON SAG OF CONDUCTOR INSTALLED.
2. LOCATION OF GUY MAY BE MOVED DEPENDING ON SIZE OF CONDUCTOR.
3. HENDRIX BRACKET (ITEM 22) USED ONLY WITH ATTACHED SECONDARIES.
4. STREET LIGHT MAY BE MOUNTED WITHIN 12" OF COMMUNICATIONS/FIRE ALARM AS LONG AS STREET LIGHT IS GROUNDED.
5. ALL NEW POLES SET FOR PRIMARY CONSTRUCTION SHALL BE 45' MINIMUM.
6. GUY SHOWN FOR LOCATION ONLY. SEE SECTION 0600 FOR GUYING INFORMATION.

<b>BURLINGTON ELECTRIC DEPT.</b>	
<b>DISTRIBUTION STANDARDS</b>	
<b>THREE Ø POLE</b>	
<b>21° - 60°</b>	
DATE: 03/13/19	DWG. NO.: 090501
DWN BY: RG	APP. BY:
SCALE: NONE	SHEET 1 OF 1

0905

MATERIAL LIST

<u>ITEM</u>	<u>QUANTITY</u>	<u>DESCRIPTION</u>	<u>STOCK CODE</u>		
2	2	CROSSARM, 8 FOOT	PLH	XAW	00030
3	4	CROSSARM BRACE - 28" STEEL	PLH	BRS	00010
5	6	PIN (SADDLE BACK) INSULATOR	PLH	INP	00010
8	6	CROSSARM PIN, 6"	-	GENERAL	STOCK
9	2	1/2" LAG BOLT & SPRING WASHER	-	GENERAL	STOCK
10	1	NEUTRAL BRACKET	PLH	BKT	00160
11	1	SPOOL INSULATOR	PLH	INL	00020
13	4	3/8" CARRIAGE BOLT COMBO	-	GENERAL	STOCK
14	2	5/8" MACHINE BOLT COMBO	-	GENERAL	STOCK
99	3	5/8" DOUBLE ARMING BOLT COMBO	-	GENERAL	STOCK

OPTIONAL EQUIPMENT

<u>ITEM</u>	<u>QUANTITY</u>	<u>DESCRIPTION</u>	<u>STOCK CODE</u>		
14	2	5/8" MACHINE BOLT COMBO	-	GENERAL	STOCK
22	1	HENDRIX BRACKET	PLH	HDX	00100
29	1	EYELET	-	GENERAL	STOCK

BURLINGTON ELECTRIC DEPT.

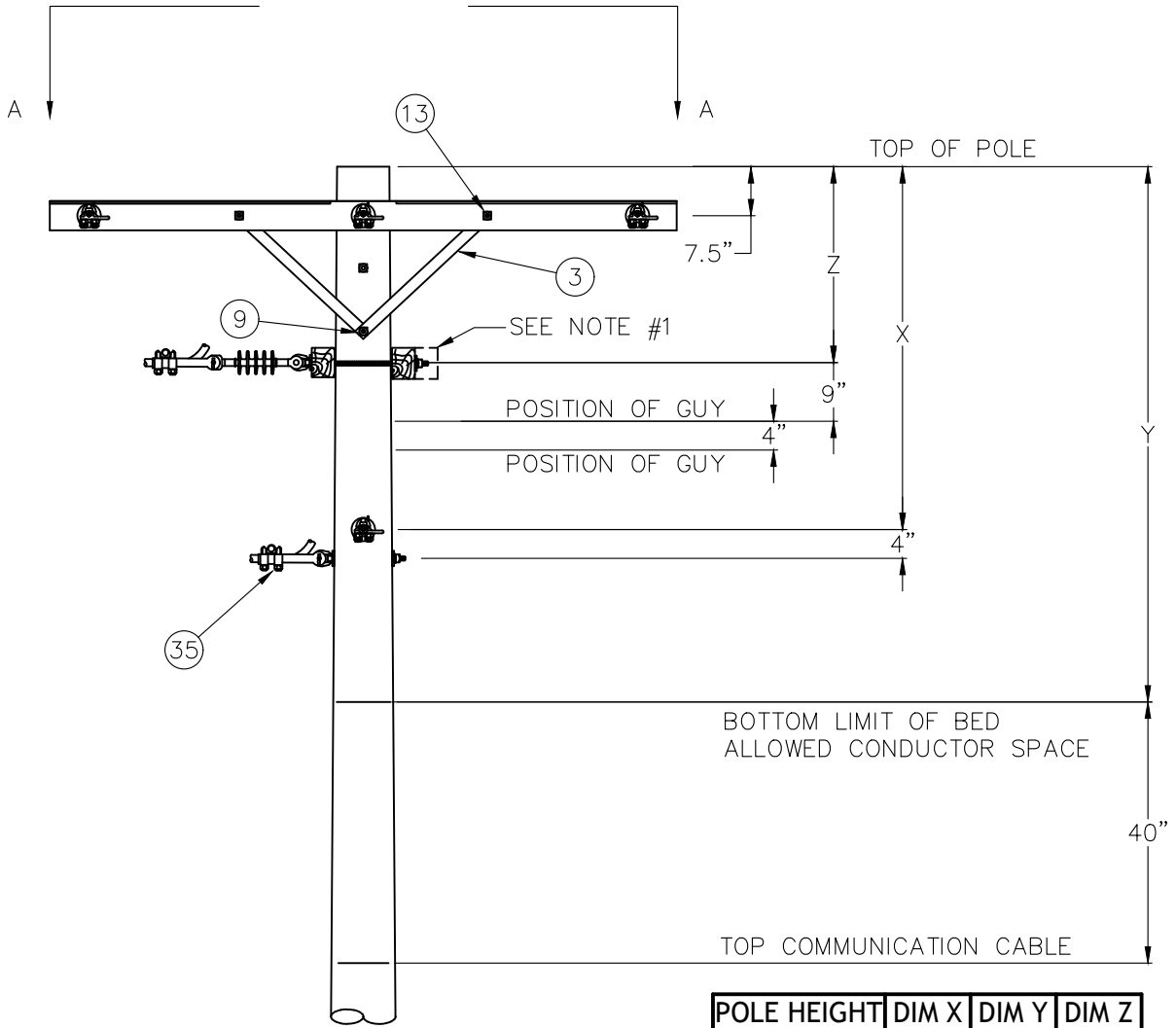
DISTRIBUTION STANDARDS

THREE  $\Phi$  POLE 21°-60°

DATE: 03/13/19 DWG. NO.: 090502

DWN BY: RG APP. BY:

SCALE: NONE SHEET 2 OF 2



GUYS NOT SHOWN FOR CLARITY OF VIEW  
SEE SHEET 2

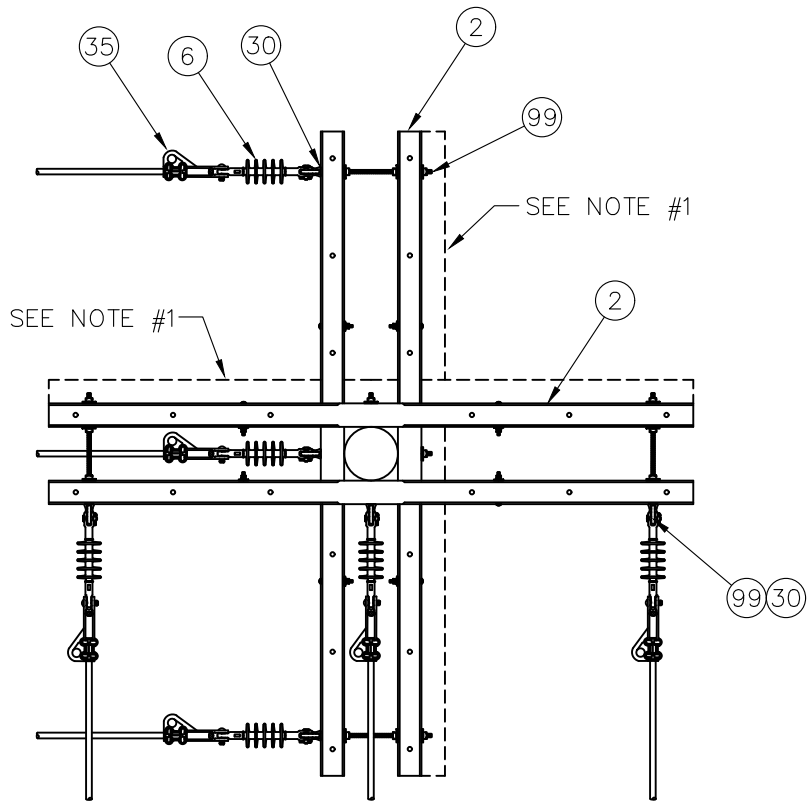
POLE HEIGHT	DIM X	DIM Y	DIM Z
45'	92"	118"	48"
50'	128"	158"	48"
55'	166"	200"	48"

**NOTES**

1. FOR 556 PRIMARY CONSTRUCTION USE EXTRA ARM FOR DEADENDS. ADD (2) WASHERS AS SPACER BETWEEN CROSSARMS.
2. NEUTRAL ATTACHMENT MAY BE LOWER DEPENDING ON SAG OF CONDUCTOR INSTALLED.
3. LOCATION OF GUY MAY BE MOVED DEPENDING ON SIZE OF CONDUCTOR.
4. STREET LIGHT MAY BE MOUNTED WITHIN 12" OF COMMUNICATIONS/FIRE ALARM AS LONG AS STREET LIGHT IS GROUNDED.
5. ALL NEW POLES SET FOR PRIMARY CONSTRUCTION SHALL BE 45' MINIMUM.

<b>BURLINGTON ELECTRIC DEPT.</b>	
<b>DISTRIBUTION STANDARDS</b>	
<b>THREE Ø POLE</b>	
<b>61° - 90°</b>	
DATE: 03/13/19	DWG. NO.: 090601
DWN BY: RG	APP. BY:
SCALE: NONE	SHEET 1 OF 2





VIEW A-A

BURLINGTON ELECTRIC DEPT.	
DISTRIBUTION STANDARDS	
THREE Ø POLE	
61° - 90°	

DATE: 03/27/17	DWG. NO.: 090602
DWN BY: RG	APP. BY:
SCALE: NONE	SHEET 2 OF 2

MATERIAL LIST

<u>ITEM</u>	<u>QUANTITY</u>	<u>DESCRIPTION</u>	<u>STOCK CODE</u>		
1	1	WOOD POLE	SEE	MATERIAL	LIST
2	4	CROSSARM, 8 FOOT	PLH	XAW	00030
3	8	CROSSARM BRACE - 28" STEEL	PLH	BRS	00010
6	6	SUSPENSION INSULATOR	PLH	IND	00010
9	4	1/2" LAG BOLT & SPRING WASHER	-	GENERAL	STOCK
13	8	3/8" CARRIAGE BOLT COMBO	-	GENERAL	STOCK
14	4	5/8" MACHINE BOLT COMBO	-	GENERAL	STOCK
30	8	EYE NUT	-	GENERAL	STOCK
35	8	DEADEND CLAMP - #6 TO 2/0	CLA	DEA	00010
		DEADEND CLAMP - #4 TO 556 KCMIL	CLA	DEA	00050
99	6	5/8" DOUBLE ARMING BOLT COMBO	-	GENERAL	STOCK

OPTIONAL EQUIPMENT

<u>ITEM</u>	<u>QUANTITY</u>	<u>DESCRIPTION</u>	<u>STOCK CODE</u>		
5	AS REQUIRED	PIN (SADDLE BACK) INSULATOR	PLH	INP	00010
8	AS REQUIRED	CROSSARM PIN, 6"	-	GENERAL	STOCK

BURLINGTON ELECTRIC DEPT.

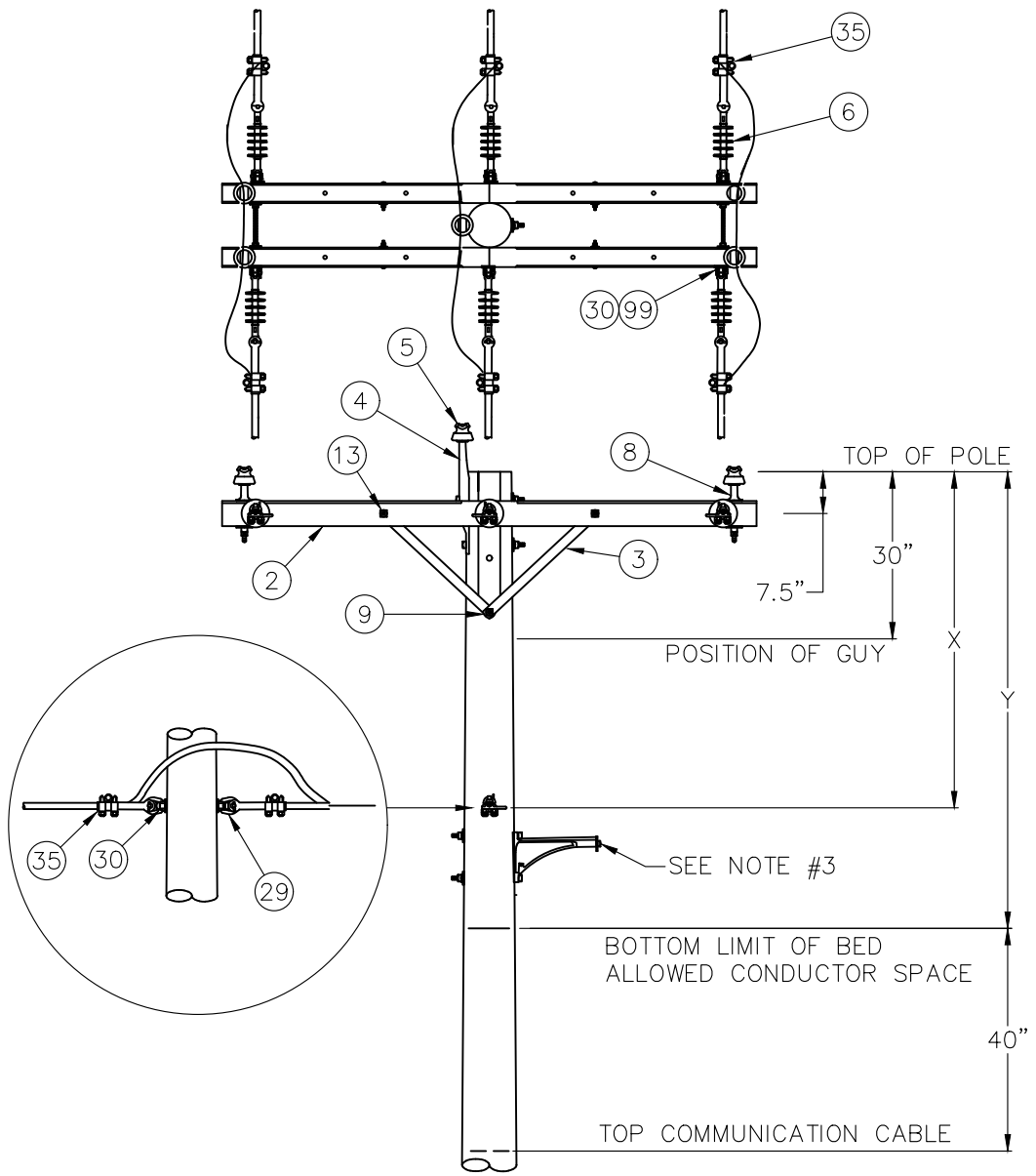
DISTRIBUTION STANDARDS

THREE  $\Phi$  POLE 61°-90°

DATE: 03/27/19 DWG. NO.: 090603

DWN BY: RG APP. BY:

SCALE: NONE SHEET 3 OF 3



POLE HEIGHT	DIM X	DIM Y
45'	92"	118"
50'	128"	158"
55'	166"	200"

**NOTES**

1. NEUTRAL ATTACHMENT MAY BE LOWER DEPENDING ON SAG OF CONDUCTOR INSTALLED.
2. IF GUY IS USED, LOCATION OF GUY MAY BE MOVED DEPENDING ON SIZE OF CONDUCTOR.
3. HENDRIX BRACKET (ITEM 22) USED ONLY WITH ATTACHED SECONDARIES.
4. STREET LIGHT MAY BE MOUNTED WITHIN 12" OF COMMUNICATIONS/FIRE ALARM AS LONG AS STREET LIGHT IS GROUNDED.
5. ALL NEW POLES SET FOR PRIMARY CONSTRUCTION SHALL BE 45' MINIMUM.

**BURLINGTON ELECTRIC DEPT.  
DISTRIBUTION STANDARDS  
THREE Ø POLE  
DOUBLE DEADEND**

DATE: 03/13/19	DWG. NO.: 090701
DWN BY: RG	APP. BY:
SCALE: NONE	SHEET 1 OF 1

0907

MATERIAL LIST

<u>ITEM</u>	<u>QUANTITY</u>	<u>DESCRIPTION</u>	<u>STOCK CODE</u>		
2	2	CROSSARM, 8 FOOT	PLH	XAW	00030
3	4	CROSSARM BRACE - 28" STEEL	PLH	BRS	00010
4	1	POLE TOP PIN, 20"	PLH	PIN	00010
5	5	PIN (SADDLE BACK) INSULATOR	PLH	INP	00010
6	6	SUSPENSION INSULATOR	PLH	IND	00010
8	4	CROSSARM PIN, 6"	-	GENERAL	STOCK
9	2	1/2" LAG BOLT & SPRING WASHER	-	GENERAL	STOCK
13	4	3/8" CARRIAGE BOLT COMBO	-	GENERAL	STOCK
14	3	5/8" MACHINE BOLT COMBO	-	GENERAL	STOCK
30	8	EYE NUT	-	GENERAL	STOCK
35	8	DEADEND CLAMP - #6 TO 2/0	CLA	DEA	00010
		DEADEND CLAMP - #4 TO 556 KCMIL	CLA	DEA	00050
99	3	5/8" DOUBLE ARMING BOLT COMBO	-	GENERAL	STOCK
108	AS REQUIRED	TIE WIRE	ECW	TIE	00020

OPTIONAL EQUIPMENT

<u>ITEM</u>	<u>QUANTITY</u>	<u>DESCRIPTION</u>	<u>STOCK CODE</u>		
22	1	HENDRIX BRACKET	PLH	HDX	00100
29	1	EYELET	-	GENERAL	STOCK

BURLINGTON ELECTRIC DEPT.

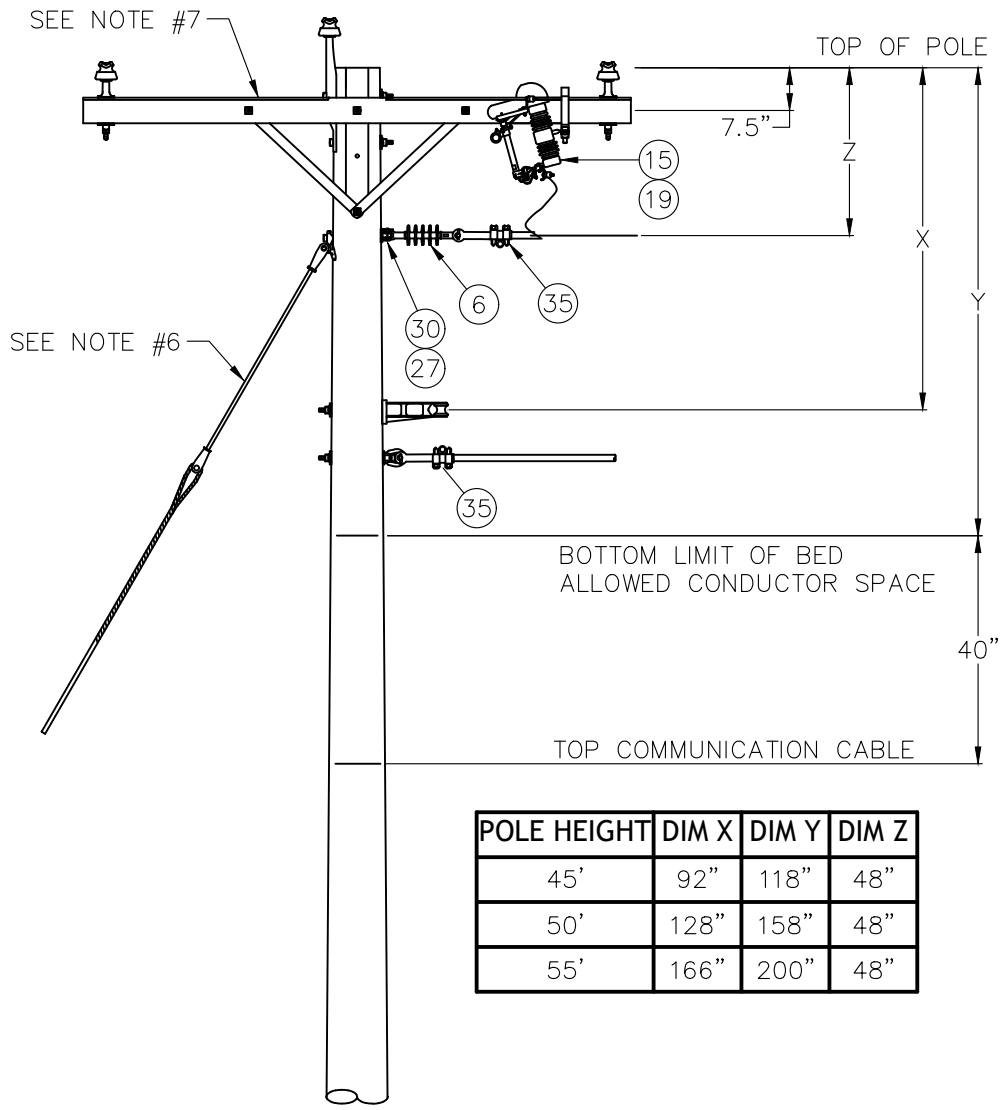
DISTRIBUTION STANDARDS

THREE  $\Phi$  POLE DOUBLE  
DEADEND

DATE: 03/13/19 DWG. NO.: 090702

DWN BY: RG APP. BY:

SCALE: NONE SHEET 2 OF 2



POLE HEIGHT	DIM X	DIM Y	DIM Z
45'	92"	118"	48"
50'	128"	158"	48"
55'	166"	200"	48"

**NOTES**

1. NEUTRAL ATTACHMENT MAY BE LOWER DEPENDING ON SAG OF CONDUCTOR INSTALLED.
2. LOCATION OF GUY MAY BE MOVED DEPENDING ON SIZE OF CONDUCTOR.
3. HENDRIX BRACKET (ITEM 22) USED ONLY WITH ATTACHED SECONDARIES.
4. STREET LIGHT MAY BE MOUNTED WITHIN 12" OF COMMUNICATIONS/FIRE ALARM AS LONG AS STREET LIGHT IS GROUNDED.
5. ALL NEW POLES SET FOR PRIMARY CONSTRUCTION SHALL BE 45' MINIMUM.
6. GUY WIRE SHOWN FOR LOCATION ONLY. SEE SECTION 0600 FOR GUYING INFORMATION.
7. FOR THREE PHASE CROSSARM CONSTRUCTION, SEE 0904.

**BURLINGTON ELECTRIC DEPT.  
DISTRIBUTION STANDARDS  
THREE Ø POLE  
WITH SINGLE Ø TAP**

DATE: 03/13/19	DWG. NO.: 090801
DWN BY: RG	APP. BY:
SCALE: NONE	SHEET 1 OF 1

MATERIAL LIST

<u>ITEM</u>	<u>QUANTITY</u>	<u>DESCRIPTION</u>	<u>STOCK CODE</u>		
6	2	SUSPENSION INSULATOR	PLH	IND	00010
14	6	5/8" MACHINE BOLT COMBO	-	GENERAL	STOCK
15	1	FUSED CUTOUT	SWI	CUT	00070
19	1	HOT LINE CLAMP (3/0 - #6)	CLA	HLC	00010
30	2	EYE NUT	-	GENERAL	STOCK
35	2	DEADEND CLAMP - #6 TO 2/0	CLA	DEA	00010
		DEADEND CLAMP - #4 TO 556 KCMIL	CLA	DEA	00050

BURLINGTON ELECTRIC DEPT.

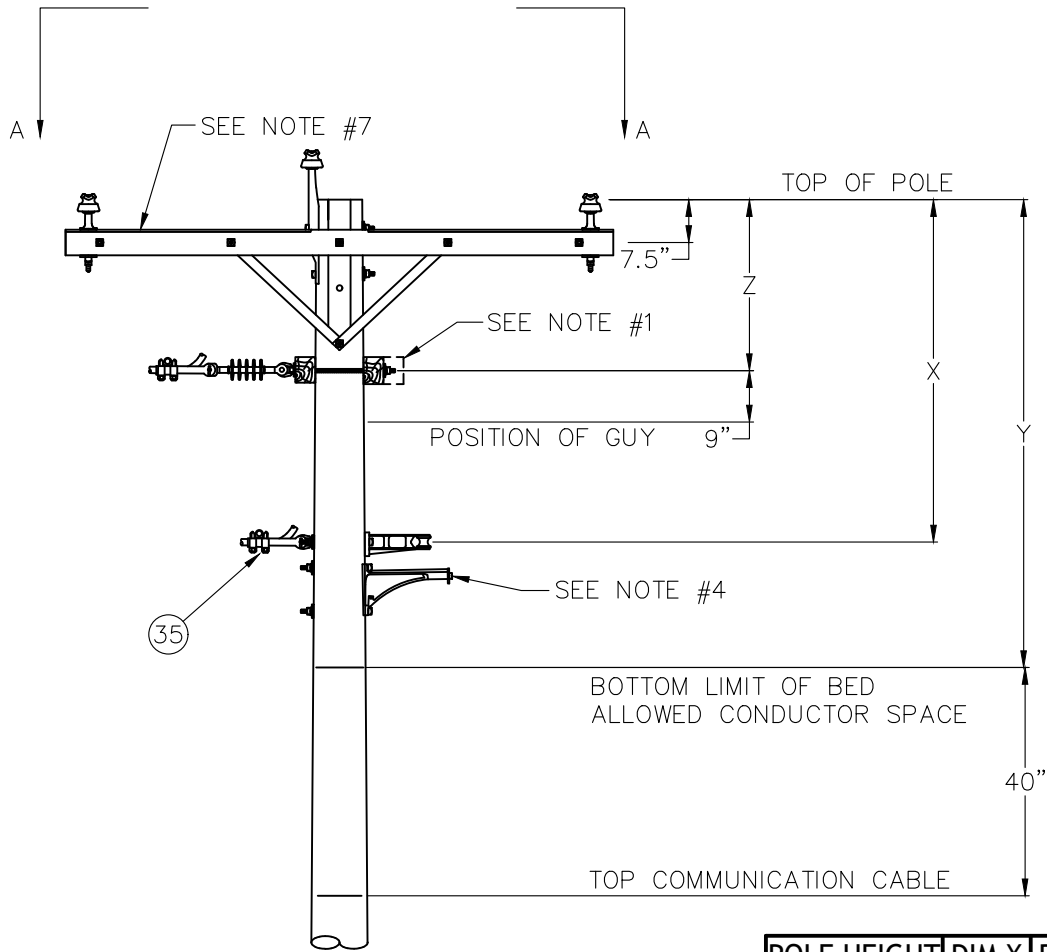
DISTRIBUTION STANDARDS

THREE  $\Phi$  POLE WITHSINGLE  $\Phi$  TAP

DATE: 03/13/19 DWG. NO.: 090802

DWN BY: RG APP. BY:

SCALE: NONE SHEET 2 OF 2



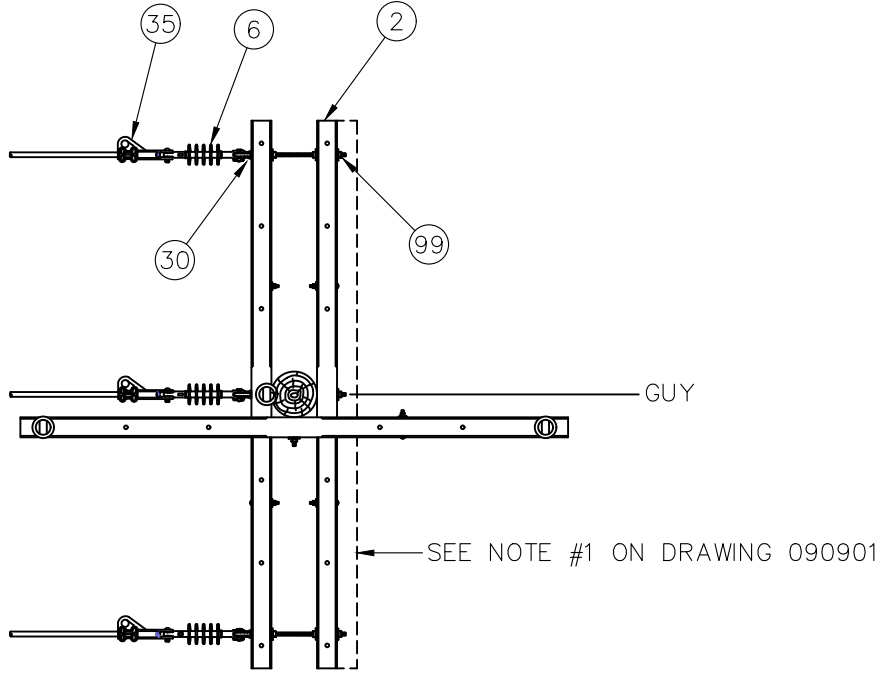
GUYS NOT SHOWN FOR CLARITY OF VIEW  
SEE SHEET 2

POLE HEIGHT	DIM X	DIM Y	DIM Z
45'	92"	118"	48"
50'	128"	158"	48"
55'	166"	200"	48"

**NOTES**

1. FOR 556 PRIMARY CONSTRUCTION USE EXTRA ARM FOR DEADEND.
2. NEUTRAL ATTACHMENT MAY BE LOWER DEPENDING ON SAG OF CONDUCTOR INSTALLED.
3. LOCATION OF GUY MAY BE MOVED DEPENDING ON SIZE OF CONDUCTOR.
4. HENDRIX BRACKET (ITEM 22) USED ONLY WITH ATTACHED SECONDARIES.
5. STREET LIGHT MAY BE MOUNTED WITHIN 12" OF COMMUNICATIONS/FIRE ALARM AS LONG AS STREET LIGHT IS GROUNDED.
6. ALL NEW POLES SET FOR PRIMARY CONSTRUCTION SHALL BE 45' MINIMUM.
7. FOR THREE PHASE CROSSARM CONSTRUCTION, SEE 0904.

<b>BURLINGTON ELECTRIC DEPT.</b>	
<b>DISTRIBUTION STANDARDS</b>	
<b>THREE Ø POLE WITH THREE Ø TAP</b>	
DATE: 03/13/19	DWG. NO.: 090901
DWN BY: RG	APP. BY:
SCALE: NONE	SHEET 1 OF 2



VIEW A-A

BURLINGTON ELECTRIC DEPT.	
DISTRIBUTION STANDARDS	
THREE Ø POLE WITH THREE Ø TAP	

DATE: 01/28/19	DWG. NO.: 090902
DWN BY: RG	APP. BY:
SCALE: NONE	SHEET 2 OF 2



0909

MATERIAL LIST

<u>ITEM</u>	<u>QUANTITY</u>	<u>DESCRIPTION</u>	<u>STOCK CODE</u>		
2	2	CROSSARM, 8 FOOT	PLH	XAW	00030
6	3	SUSPENSION INSULATOR	PLH	IND	00010
14	5	5/8" MACHINE BOLT COMBO	-	GENERAL	STOCK
30	4	EYE NUT	-	GENERAL	STOCK
35	4	DEADEND CLAMP - #6 TO 2/0	CLA	DEA	00010
		DEADEND CLAMP - #4 TO 556 KCMIL	CLA	DEA	00050
99	3	5/8" DOUBLE ARMING BOLT COMBO	-	GENERAL	STOCK

OPTIONAL EQUIPMENT

<u>ITEM</u>	<u>QUANTITY</u>	<u>DESCRIPTION</u>	<u>STOCK CODE</u>		
14	2	5/8" MACHINE BOLT COMBO	-	GENERAL	STOCK
15	3	FUSED CUTOUT	SWI	CUT	00070
87	3	CUTOUT ANIMAL GUARD	PLH	WLP	00060

BURLINGTON ELECTRIC DEPT.

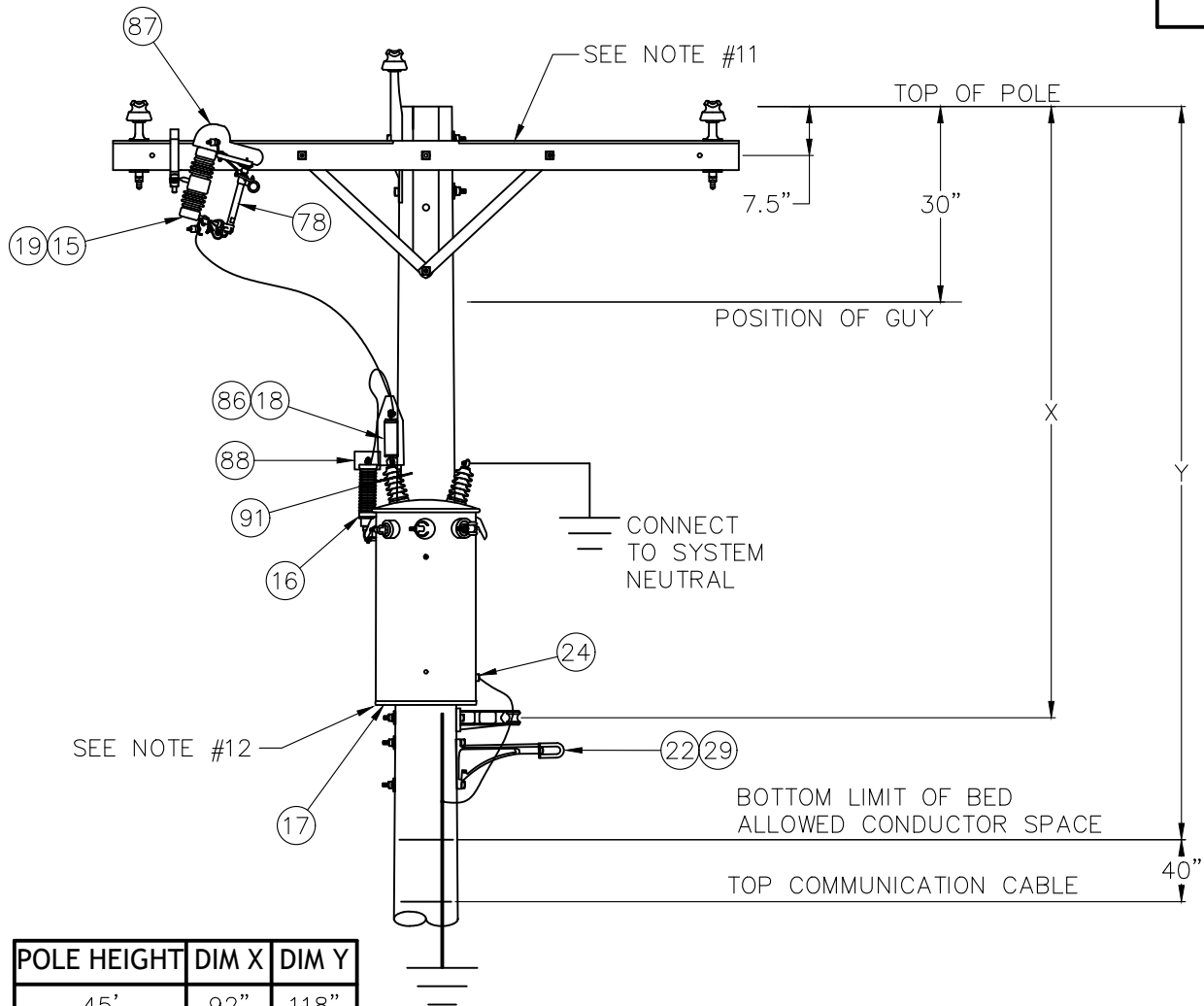
DISTRIBUTION STANDARDS

THREE  $\Phi$  POLE WITH  
THREE  $\Phi$  TAP

DATE: 03/13/19 DWG. NO.: 090903

DWN BY: RG APP. BY:

SCALE: NONE SHEET 3 OF 3



**NOTES**

1. NEUTRAL ATTACHMENT MAY BE LOWER DEPENDING ON SAG OF CONDUCTOR INSTALLED.
2. FIELD CONDITIONS WILL GOVERN EXACT LOCATION OF TRANSFORMER (DRAWING SHOWS THE LOWEST POSSIBLE LOCATION WITH TANK CASE GROUNDED).
3. TRANSFORMERS LARGER THAN 50kVA REQUIRE 3/4" HARDWARE.
4. THE PREFERRED LOCATION OF THE ARRESTER IS ON THE TRANSFORMER TANK. WIRE TO LOAD SIDE OF CUTOUT.
5. USE ANIMAL GUARD ON ARRESTER AND TRANSFORMER BUSHINGS (TOP MOUNTED BUSHING TRANSFORMERS).
6. PRIMARY AND GROUND CONNECTIONS WILL USE #2 STRANDED COPPER WITH 600 V INSULATION.
7. STREET LIGHT MAY BE MOUNTED WITHIN 12" OF COMMUNICATIONS/FIRE ALARM AS LONG AS STREET LIGHT IS GROUNDED.
8. IF GUY IS USED, LOCATION OF GUY MAY BE MOVED DEPENDING ON SIZE OF CONDUCTOR.
9. SEE DRAWING 0704 FOR GROUNDING.
10. ALL NEW POLES SET FOR PRIMARY CONSTRUCTION SHALL BE 45' MINIMUM.
11. FOR THREE PHASE CROSSARM CONSTRUCTION, SEE 0904.
12. IF SPACING REQUIRES, BOTTOM OF TRANSFORMER CAN BE NO LESS THAN 30" FROM TOP COMMUNICATION CABLE.

<b>BURLINGTON ELECTRIC DEPT.</b>	
<b>DISTRIBUTION STANDARDS</b>	
<b>THREE Ø POLE WITH TRANSFORMER &amp; SECONDARY</b>	
DATE: 03/13/19	DWG. NO.: 091001
DWN BY: RG	APP. BY:
SCALE: NONE	SHEET 1 OF 1

MATERIAL LIST

<u>ITEM</u>	<u>QUANTITY</u>	<u>DESCRIPTION</u>	<u>STOCK CODE</u>		
13	2	3/8" CARRIAGE BOLT COMBO	-	GENERAL	STOCK
14	8	5/8" MACHINE BOLT COMBO	-	GENERAL	STOCK
15	1	FUSED CUTOUT	SWI	CUT	00070
16	1	LIGHTING ARRESTER	ARR	RIS	00030
17	1	TRANSFORMER, POLE TYPE	SEE	MATERIAL	LIST
18	1	CURRENT LIMITING FUSE (40CLF)	FUS	CLF	00050
		CURRENT LIMITING FUSE (25CLF)	FUS	CLF	00060
		CURRENT LIMITING FUSE (12CLF)	FUS	CLF	00040
19	1	HOT LINE CLAMP (3/0 - #6)	CLA	HLC	00010
24	1	GROUND LUG	GRD	CON	-
86	1	TRANSFORMER ANIMAL GUARD	PLH	WLP	00080
87	1	CUTOUT ANIMAL GUARD	PLH	WLP	00060
88	1	LIGHTING ARRESTER ANIMAL GUARD	PLH	WLP	00040
91	1	STATIC GUARD PROTECTOR - ZAP SHIELD	PLH	WLP	00070

OPTIONAL EQUIPMENT

<u>ITEM</u>	<u>QUANTITY</u>	<u>DESCRIPTION</u>	<u>STOCK CODE</u>		
22	1	HENDRIX BRACKET	PLH	HDX	00100
29	1	EYELET	-	GENERAL	STOCK

BURLINGTON ELECTRIC DEPT.

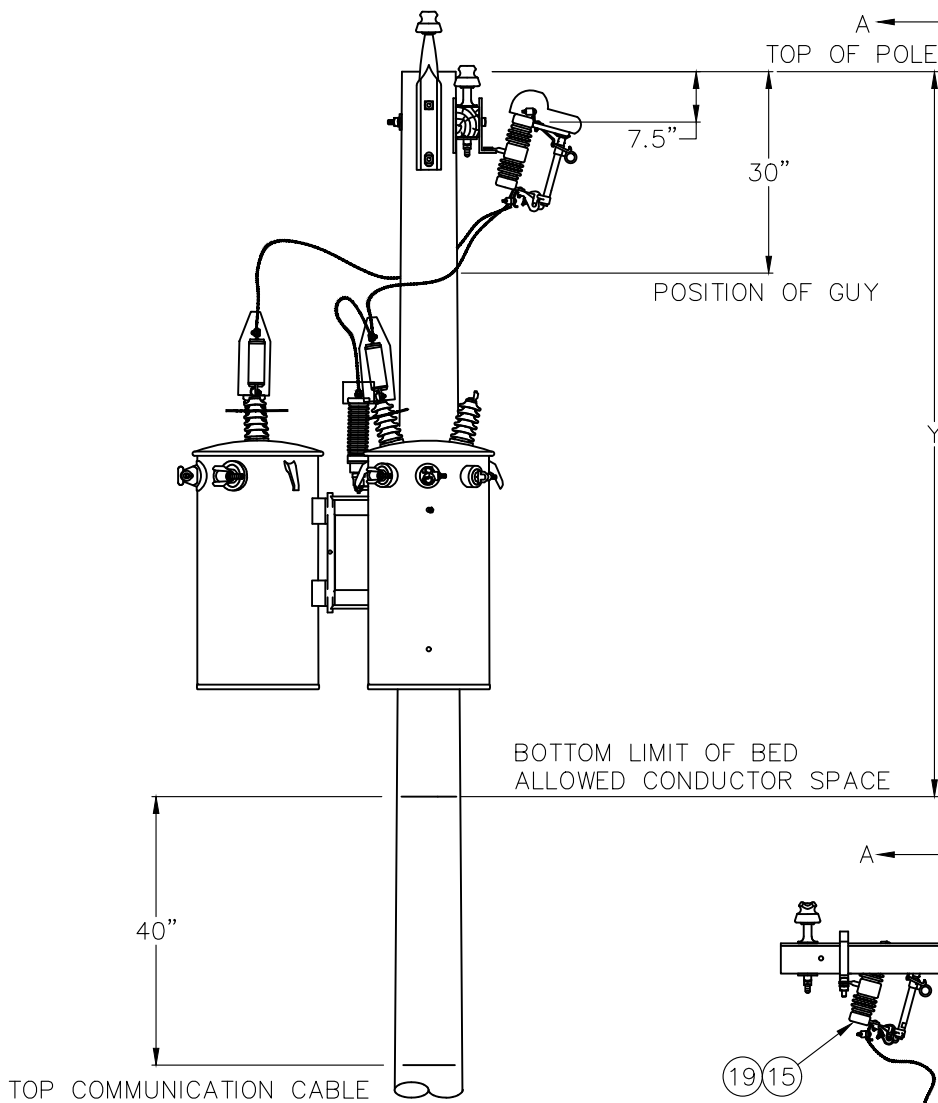
DISTRIBUTION STANDARDS

THREE  $\Phi$  POLE WITH  
TRANSFORMER & SECONDARY

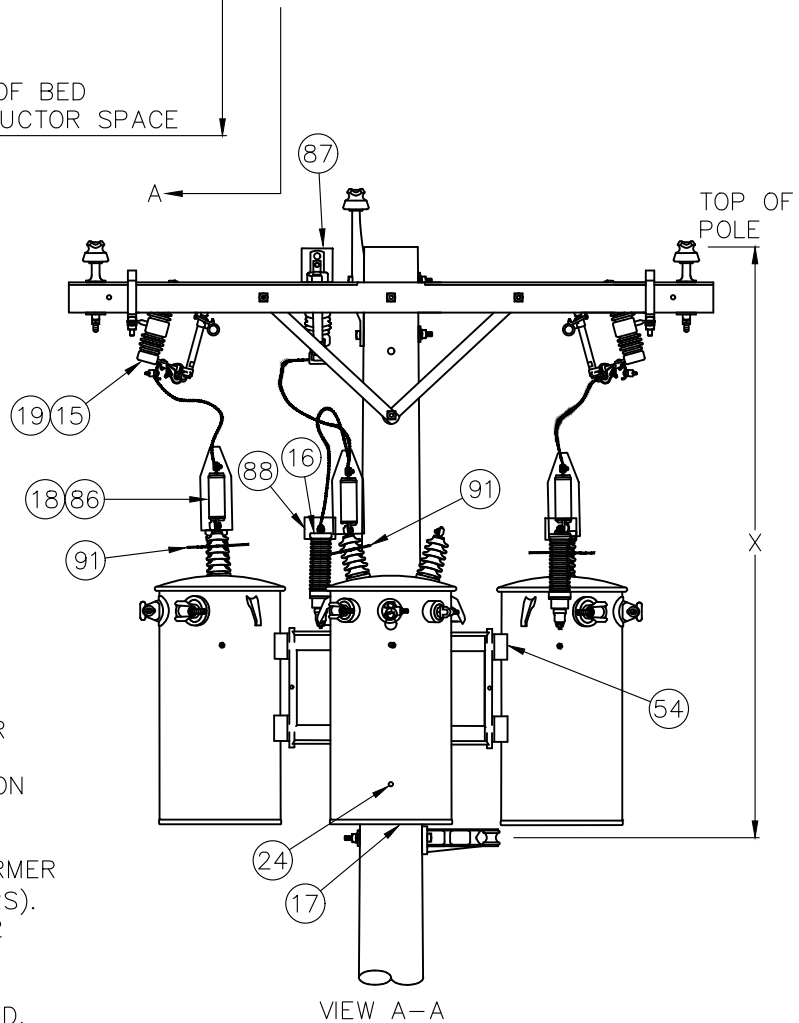
DATE: 03/13/19 DWG. NO.: 091002

DWN BY: RG APP. BY:

SCALE: NONE SHEET 2 OF 2



POLE HEIGHT	DIM X	DIM Y
45'	92"	118"
50'	128"	158"
55'	166"	200"



**NOTES**

1. NEUTRAL ATTACHMENT MAY BE LOWER DEPENDING ON SAG OF CONDUCTOR INSTALLED.
2. FIELD CONDITIONS WILL GOVERN EXACT LOCATION OF TRANSFORMER.
3. USE 3/4" HARDWARE FOR TRANSFORMER CLUSTER BRACKET.
4. THE PREFERRED LOCATION OF THE ARRESTER IS ON THE TRANSFORMER TANK. WIRE TO LOAD SIDE OF CUTOUT.
5. USE ANIMAL GUARD ON ARRESTER AND TRANSFORMER BUSHINGS (TOP MOUNTED BUSHING TRANSFORMERS).
6. PRIMARY AND GROUND CONNECTIONS WILL USE #2 STRANDED COPPER WITH 600 V INSULATION.
7. STREET LIGHT MAY BE MOUNTED WITHIN 12" OF COMMUNICATIONS AS LONG AS LIGHT IS GROUNDED.
8. IF GUY IS USED, LOCATION OF GUY MAY BE MOVED DEPENDING ON SIZE OF CONDUCTOR.
9. SEE DRAWING 0704 FOR GROUNDING.
10. TRANSFORMER CONNECTIONS WILL VARY WITH VOLTAGE REQUIREMENTS.
11. ALL NEW POLES SET FOR PRIMARY CONSTRUCTION SHALL BE 45' MINIMUM.

<b>BURLINGTON ELECTRIC DEPT.</b>	
<b>DISTRIBUTION STANDARDS</b>	
<b>THREE Ø POLE WITH TRANSFORMER BANK</b>	
DATE: 03/13/19	DWG. NO.: 091101
DWN BY: RG	APP. BY:
SCALE: NONE	SHEET 1 OF 1

0911

MATERIAL LIST

<u>ITEM</u>	<u>QUANTITY</u>	<u>DESCRIPTION</u>	<u>STOCK CODE</u>		
10	1	NEUTRAL BRACKET	PLH	BKT	00160
11	1	SPOOL INSULATOR	PLH	INL	00020
13	2	3/8" CARRIAGE BOLT COMBO	-	GENERAL	STOCK
14	4	5/8" MACHINE BOLT COMBO	-	GENERAL	STOCK
15	3	FUSED CUTOUT	SWI	CUT	00070
16	3	LIGHTING ARRESTER	ARR	RIS	00030
17	3	TRANSFORMER, POLE TYPE	SEE	MATERIAL	LIST
18	3	CURRENT LIMITING FUSE (40CLF)	FUS	CLF	00050
		CURRENT LIMITING FUSE (25CLF)	FUS	CLF	00060
		CURRENT LIMITING FUSE (12CLF)	FUS	CLF	00040
19	3	HOT LINE CLAMP (3/0 - #6)	CLA	HLC	00010
		HOT LINE CLAMP (1/0 - #8)	CLA	HLC	00030
		HOT LINE CLAMP (>3/0)	CLA	HLC	00040
24	3	GROUND LUG	GRD	CON	-
54	1	CLUSTER BRACKET 250 KVA OR LARGER	PLH	BKX	00010
		CLUSTER BRACKET 100 KVA TO 250 KVA	PLH	BKX	00030
		CLUSTER BRACKET 50 KVA OR LESS	PLH	BKX	00020
64	2	3/4" MACHINE BOLT COMBO	-	GENERAL	STOCK

BURLINGTON ELECTRIC DEPT.

DISTRIBUTION STANDARDS

THREE  $\Phi$  POLE WITH  
TRANSFORMER BANK

DATE: 03/13/19 DWG. NO.: 091102

DWN BY: RG APP. BY:

SCALE: NONE SHEET 2 OF 3

<u>ITEM</u>	<u>QUANTITY</u>	<u>DESCRIPTION</u>	<u>STOCK CODE</u>		
86	3	TRANSFORMER ANIMAL GUARD	PLH	WLP	00080
87	3	CUTOUT ANIMAL GUARD	PLH	WLP	00060
88	3	LIGHTING ARRRESTER ANIMAL GUARD	PLH	WLP	00040
91	3	STATIC GUARD PROTECTOR - ZAP SHIELD	PLH	WLP	00070

OPTIONAL EQUIPMENT

<u>ITEM</u>	<u>QUANTITY</u>	<u>DESCRIPTION</u>	<u>STOCK CODE</u>		
22	1	HENDRIX BRACKET	PLH	HDX	00100
29	1	EYELET	-	GENERAL	STOCK

BURLINGTON ELECTRIC DEPT.

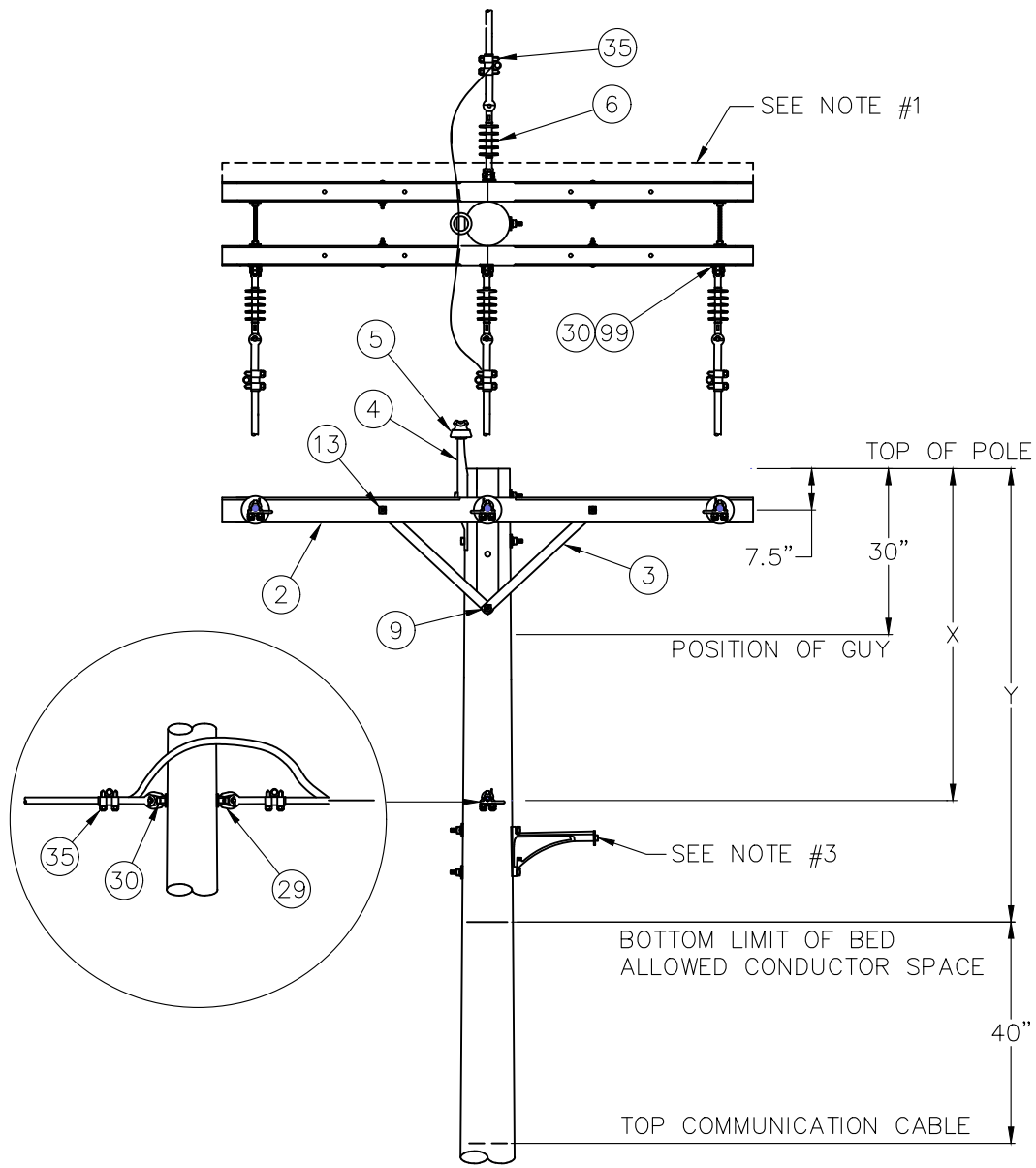
DISTRIBUTION STANDARDS

THREE  $\Phi$  POLE WITH  
TRANSFORMER BANK

DATE: 03/13/19      DWG. NO.: 091103

DWN BY: RG      APP. BY:

SCALE: NONE      SHEET 3 OF 3



POLE HEIGHT	DIM X	DIM Y
45'	92"	118"
50'	128"	158"
55'	166"	200"

**NOTES**

1. FOR 556 PRIMARY CONSTRUCTION USE EXTRA CROSSARM FOR DEADENDS. ADD (2) WASHERS AS SPACER BETWEEN CROSSARMS.
2. NEUTRAL ATTACHMENT MAY BE LOWER DEPENDING ON SAG OF CONDUCTOR INSTALLED.
3. IF GUY IS USED, LOCATION OF GUY MAY BE MOVED DEPENDING ON SIZE OF CONDUCTOR.
4. HENDRIX BRACKET (ITEM 22) USED ONLY WITH ATTACHED SECONDARIES.

**BURLINGTON ELECTRIC DEPT.**  
**DISTRIBUTION STANDARDS**  
**THREE Ø TO ONE Ø**  
**DOUBLE DEADEND POLE**

DATE: 03/13/19	DWG. NO.: 091201
DWN BY: RG	APP. BY:
SCALE: NONE	SHEET 1 OF 1

MATERIAL LIST

<u>ITEM</u>	<u>QUANTITY</u>	<u>DESCRIPTION</u>	<u>STOCK CODE</u>		
2	2	CROSSARM, 8 FOOT	PLH	XAW	00030
3	4	CROSSARM BRACE - 28" STEEL	PLH	BRS	00010
4	1	POLE TOP PIN, 20"	PLH	PIN	00010
5	1	PIN (SADDLE BACK) INSULATOR	PLH	INP	00010
6	4	SUSPENSION INSULATOR	PLH	IND	00010
9	2	1/2" LAG BOLT & SPRING WASHER	-	GENERAL	STOCK
13	4	3/8" CARRIAGE BOLT COMBO	-	GENERAL	STOCK
30	3	EYE NUT	-	GENERAL	STOCK
35	6	DEADEND CLAMP - #6 TO 2/0	CLA	DEA	00010
		DEADEND CLAMP - #4 TO 556 KCMIL	CLA	DEA	00050
99	2	5/8" DOUBLE ARMING BOLT COMBO	-	GENERAL	STOCK

BURLINGTON ELECTRIC DEPT.

DISTRIBUTION STANDARDS

THREE  $\Phi$  TO ONE  $\Phi$ 

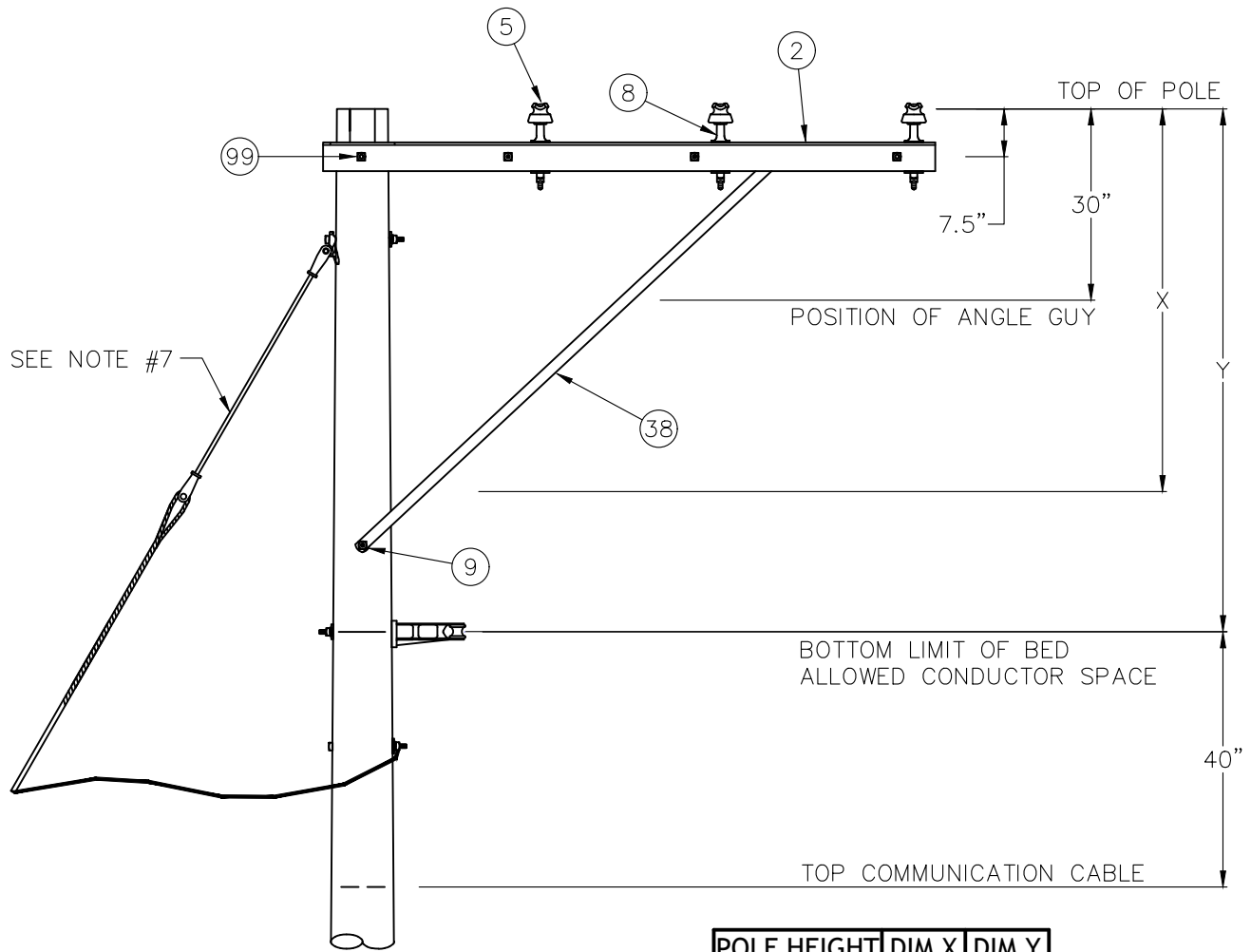
DOUBLE DEADEND POLE

DATE: 03/13/19 | DWG. NO.: 091202

DWN BY: RG | APP. BY:

SCALE: NONE | SHEET 2 OF 2





POLE HEIGHT	DIM X	DIM Y
45'	92"	118"
50'	128"	158"
55'	166"	200"

**NOTES**

1. NEUTRAL ATTACHMENT MAY BE LOWER DEPENDING ON SAG OF CONDUCTOR INSTALLED.
2. LOCATION OF GUY MAY BE MOVED DEPENDING ON SIZE OF CONDUCTOR.
3. HENDRIX BRACKET (ITEM 22) AND EYELET (ITEM 29) USED ONLY WITH ATTACHED SECONDARIES.
4. STREET LIGHT MAY BE MOUNTED WITHIN 12" OF COMMUNICATIONS/FIRE ALARM AS LONG AS STREET LIGHT IS GROUNDED.
5. ALL NEW POLES SET FOR PRIMARY CONSTRUCTION SHALL BE 45' MINIMUM.
6. ANGLE NOT TO EXCEED 5°.
7. GUY WIRE SHOWN FOR LOCATION ONLY. SEE SECTION 0600 FOR GUYING INFORMATION.

<b>BURLINGTON ELECTRIC DEPT.</b>	
<b>DISTRIBUTION STANDARDS</b>	
<b>THREE Ø POLE WITH ALLEY ARM</b>	
DATE: 03/13/19	DWG. NO.: 091301
DWN BY: RG	APP. BY:
SCALE: NONE	SHEET 1 OF 1

0913

MATERIAL LIST

<u>ITEM</u>	<u>QUANTITY</u>	<u>DESCRIPTION</u>	<u>STOCK CODE</u>		
2	2	CROSSARM, 8 FOOT	PLH	XAW	00030
3B	2	CROSSARM BRACE - 7' WOOD (ALLEY ARM)	PLH	BRW	00030
5	6	PIN (SADDLE BACK) INSULATOR	PLH	INP	00010
8	6	CROSSARM PIN, 6"	-	GENERAL	STOCK
9	2	1/2" LAG BOLT & SPRING WASHER	-	GENERAL	STOCK
99	3	5/8" DOUBLE ARMING BOLT COMBO	-	GENERAL	STOCK

BURLINGTON ELECTRIC DEPT.

DISTRIBUTION STANDARDS

THREE  $\Phi$  POLE WITH  
ALLEY ARM

DATE: 03/13/19 | DWG. NO.: 091302

DWN BY: RG | APP. BY:

SCALE: NONE | SHEET 2 OF 2