

**INDEX - THREE  $\Phi$  CONSTRUCTION SPACER CABLE**

| DWG NO. | TITLE   | REV DATE |
|---------|---|----------|
| 1101    | SPACE CABLE - GENERAL                             | 04/04/17 |
| 1102    | THREE $\Phi$ POLE 0°-6°                           | 03/13/19 |
| 1103    | THREE $\Phi$ POLE 7°-45°                          | 03/13/19 |
| 1104    | THREE $\Phi$ POLE 45°-90°                         | 03/13/19 |
| 1105    | THREE $\Phi$ POLE DOUBLE DEADEND                  | 03/13/19 |
| 1106    | THREE $\Phi$ POLE WITH SINGLE $\Phi$ TAP          | 03/13/19 |
| 1107    | THREE $\Phi$ POLE WITH THREE $\Phi$ TAP           | 03/13/19 |
| 1108    | THREE $\Phi$ POLE WITH TRANSFORMER &<br>SECONDARY | 03/13/19 |
| 1109    | THREE $\Phi$ POLE WITH TRANSFORMER<br>BANK        | 03/13/19 |
| 1110    | SPACER THREE $\Phi$ POLE DEADEND                  | 03/13/19 |

BURLINGTON ELECTRIC DEPT.

DISTRIBUTION STANDARDS

THREE  $\Phi$  CONSTRUCTION  
SPACER CABLE

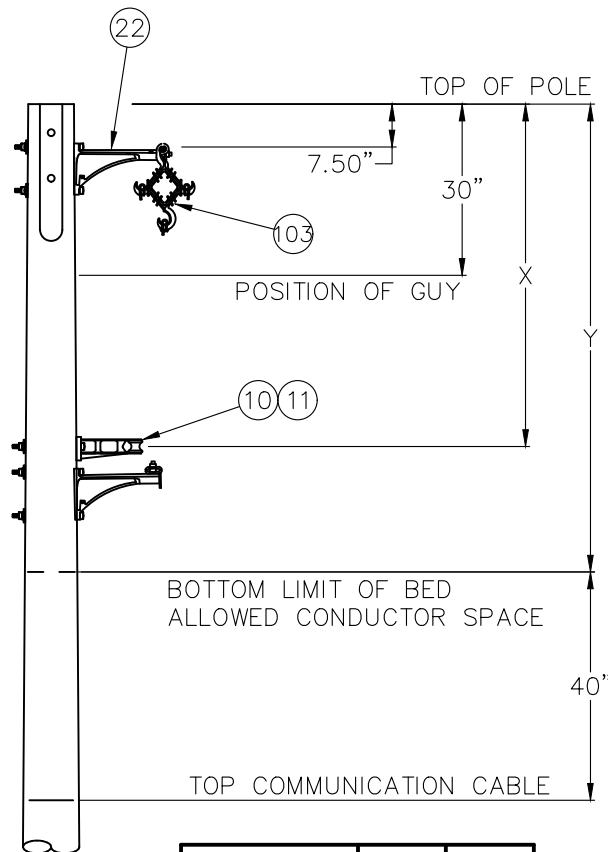
DATE: 02/19/15 DWG. NO.: 110001

DWN BY: RG APP. BY:

SCALE: NONE SHEET 1 OF 1

- 1. SPACER CABLE IS MOST USEFUL:
  - A. WHERE SPACE IS LIMITED BY TREES THAT MAY NOT BE TRIMMED.
  - B. WHERE SPACE IS LIMITED BY CONFLICTING BUILDINGS.
  - C. WHERE SPACE IS LIMITED BY MULTIPLE CIRCUITS.
  - D. WHERE RIGHT-OF-WAY IS NARROW.
- 2. IF A SECOND CIRCUIT IS POSSIBLE IN THE FUTURE, DESIGN FOR DOUBLE CIRCUIT SPACER CABLE.
- 3. INSTALL LIGHTNING ARRESTERS WHERE THE CONDUCTOR INSULATION IS REMOVED AND THE CONDUCTOR IS NOT RE-INSULATED TO FULL INSULATION VALUE. INSTALL LIGHTNING ARRESTERS AT ALL TAPS AND SPACER CABLE END POINTS. COMPRESSION SPLICES SHALL BE RE-INSULATED.
- 4. IN SPANS, INSTALL SPACERS 30' APART.
- 5. SPACER CABLE STANDARDS ARE DESIGNED FOR 052 AWA MESSENGER SUPPORTING 3-1/C 556.5 KCMIL COMPACT 15kV SPACER CABLE.

|                                  |                  |
|----------------------------------|------------------|
| <b>BURLINGTON ELECTRIC DEPT.</b> |                  |
| <b>DISTRIBUTION STANDARDS</b>    |                  |
| <b>SPACER CABLE<br/>GENERAL</b>  |                  |
| DATE: 04/04/17                   | DWG. NO.: 110101 |
| DWN BY: RG                       | APP. BY:         |
| SCALE: NONE                      | SHEET 1 OF 1     |



| POLE HEIGHT | DIM X | DIM Y |
|-------------|-------|-------|
| 45'         | 98"   | 124"  |
| 50'         | 134"  | 164"  |
| 55'         | 172"  | 206"  |

**NOTES**

1. NEUTRAL ATTACHMENT MAY BE LOWER DEPENDING ON SAG OF CONDUCTOR INSTALLED.
2. IF GUY IS USED, LOCATION OF GUY MAY BE MOVED DEPENDING ON SIZE OF CONDUCTOR.

|                                  |                  |
|----------------------------------|------------------|
| <b>BURLINGTON ELECTRIC DEPT.</b> |                  |
| <b>DISTRIBUTION STANDARDS</b>    |                  |
| <b>SPACER THREE Ø POLE</b>       |                  |
| <b>0° - 6°</b>                   |                  |
| DATE: 03/13/19                   | DWG. NO.: 110201 |
| DWN BY: RG                       | APP. BY:         |
| SCALE: NONE                      | SHEET 1 OF 1     |

MATERIAL LIST

| <u>ITEM</u> | <u>QUANTITY</u> | <u>DESCRIPTION</u>      | <u>STOCK CODE</u> |         |       |
|-------------|-----------------|-------------------------|-------------------|---------|-------|
| 10          | 1               | NEUTRAL BRACKET         | PLH               | BKT     | 00160 |
| 11          | 1               | SPOOL INSULATOR         | PLH               | INL     | 00020 |
| 14          | 3               | 5/8" MACHINE BOLT COMBO | -                 | GENERAL | STOCK |
| 22          | 1               | HENDRIX BRACKET         | PLH               | HDX     | 00100 |
| 103         | AS REQUIRED     | 15KV SPACER WITH TIES   | PLH               | HDX     | 00080 |

OPTIONAL EQUIPMENT

| <u>ITEM</u> | <u>QUANTITY</u> | <u>DESCRIPTION</u>      | <u>STOCK CODE</u> |         |       |
|-------------|-----------------|-------------------------|-------------------|---------|-------|
| 14          | 3               | 5/8" MACHINE BOLT COMBO | -                 | GENERAL | STOCK |
| 22          | 1               | HENDRIX BRACKET         | PLH               | HDX     | 00100 |
| 29          | 1               | EYELET                  | -                 | GENERAL | STOCK |

BURLINGTON ELECTRIC DEPT.

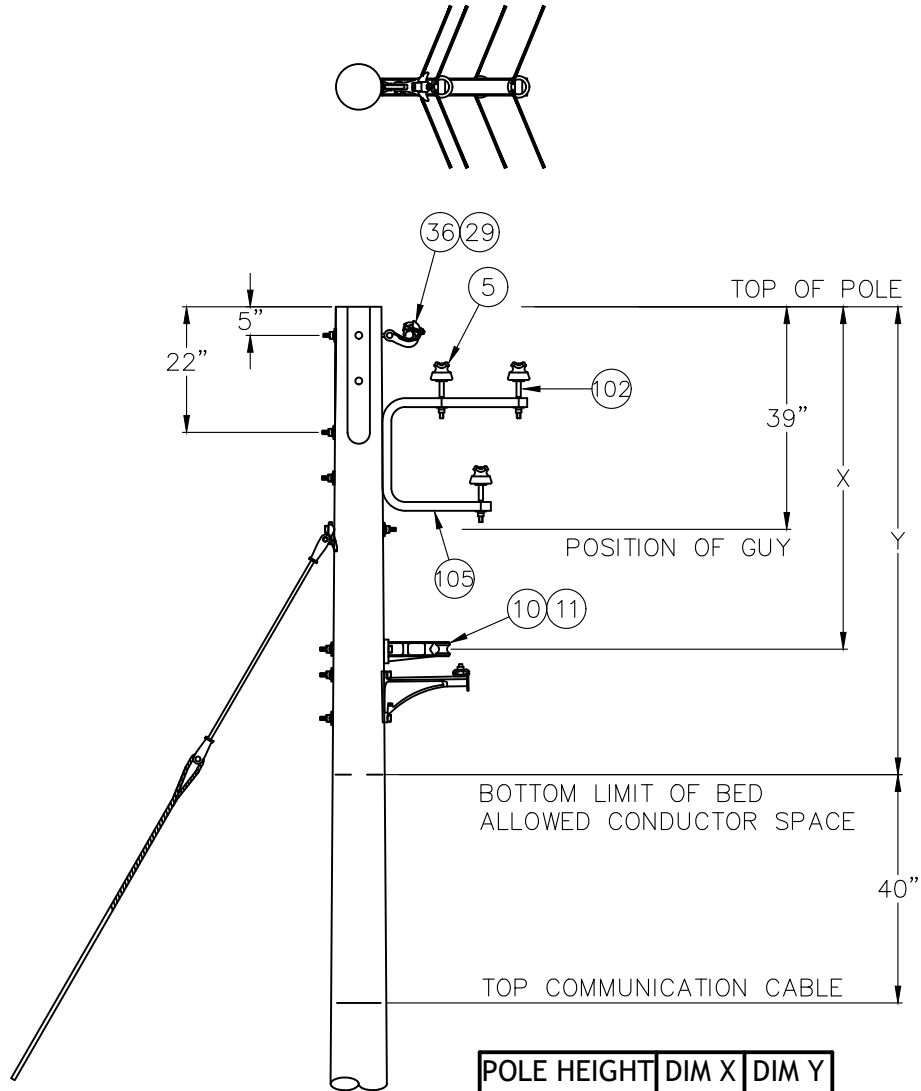
DISTRIBUTION STANDARDS

THREE  $\Phi$  POLE 0°-6°

DATE: 03/13/19 DWG. NO.: 110202

DWN BY: CC APP. BY:

SCALE: NONE SHEET 2 OF 2



| POLE HEIGHT | DIM X | DIM Y |
|-------------|-------|-------|
| 45'         | 98"   | 124"  |
| 50'         | 134"  | 164"  |
| 55'         | 172"  | 206"  |

**NOTES**

1. NEUTRAL ATTACHMENT MAY BE LOWER DEPENDING ON SAG OF CONDUCTOR INSTALLED.
2. IF GUY IS USED, LOCATION OF GUY MAY BE MOVED DEPENDING ON SIZE OF CONDUCTOR.

|                                  |                  |
|----------------------------------|------------------|
| <b>BURLINGTON ELECTRIC DEPT.</b> |                  |
| <b>DISTRIBUTION STANDARDS</b>    |                  |
| <b>SPACER THREE Ø POLE</b>       |                  |
| <b>7° - 30°</b>                  |                  |
| DATE: 03/13/19                   | DWG. NO.: 110301 |
| DWN BY: RG                       | APP. BY:         |
| SCALE: NONE                      | SHEET 1 OF 1     |

MATERIAL LIST

| <u>ITEM</u> | <u>QUANTITY</u> | <u>DESCRIPTION</u>          | <u>STOCK CODE</u> |         |       |
|-------------|-----------------|-----------------------------|-------------------|---------|-------|
| 5           | 3               | PIN (SADDLE BACK) INSULATOR | PLH               | INP     | 00010 |
| 10          | 1               | NEUTRAL BRACKET             | PLH               | BKT     | 00160 |
| 11          | 1               | SPOOL INSULATOR             | PLH               | INL     | 00020 |
| 14          | 5               | 5/8" MACHINE BOLT COMBO     | -                 | GENERAL | STOCK |
| 29          | 1               | EYELET                      | -                 | GENERAL | STOCK |
| 36          | 1               | ANGLE CLAMP                 | CLA               | ANG     | 00030 |
| 102         | 3               | INSULATOR PIN               | -                 | GENERAL | STOCK |
| 105         | 1               | SPACER CABLE ANGLE BRACKET  | -                 | NON     | STOCK |
| 108         | AS REQUIRED     | TIE WIRE                    | ECW               | TIE     | 00020 |

OPTIONAL EQUIPMENT

| <u>ITEM</u> | <u>QUANTITY</u> | <u>DESCRIPTION</u>      | <u>STOCK CODE</u> |         |       |
|-------------|-----------------|-------------------------|-------------------|---------|-------|
| 14          | 2               | 5/8" MACHINE BOLT COMBO | -                 | GENERAL | STOCK |
| 22          | 1               | HENDRIX BRACKET         | PLH               | HDX     | 00100 |
| 29          | 1               | EYELET                  | -                 | GENERAL | STOCK |

BURLINGTON ELECTRIC DEPT.

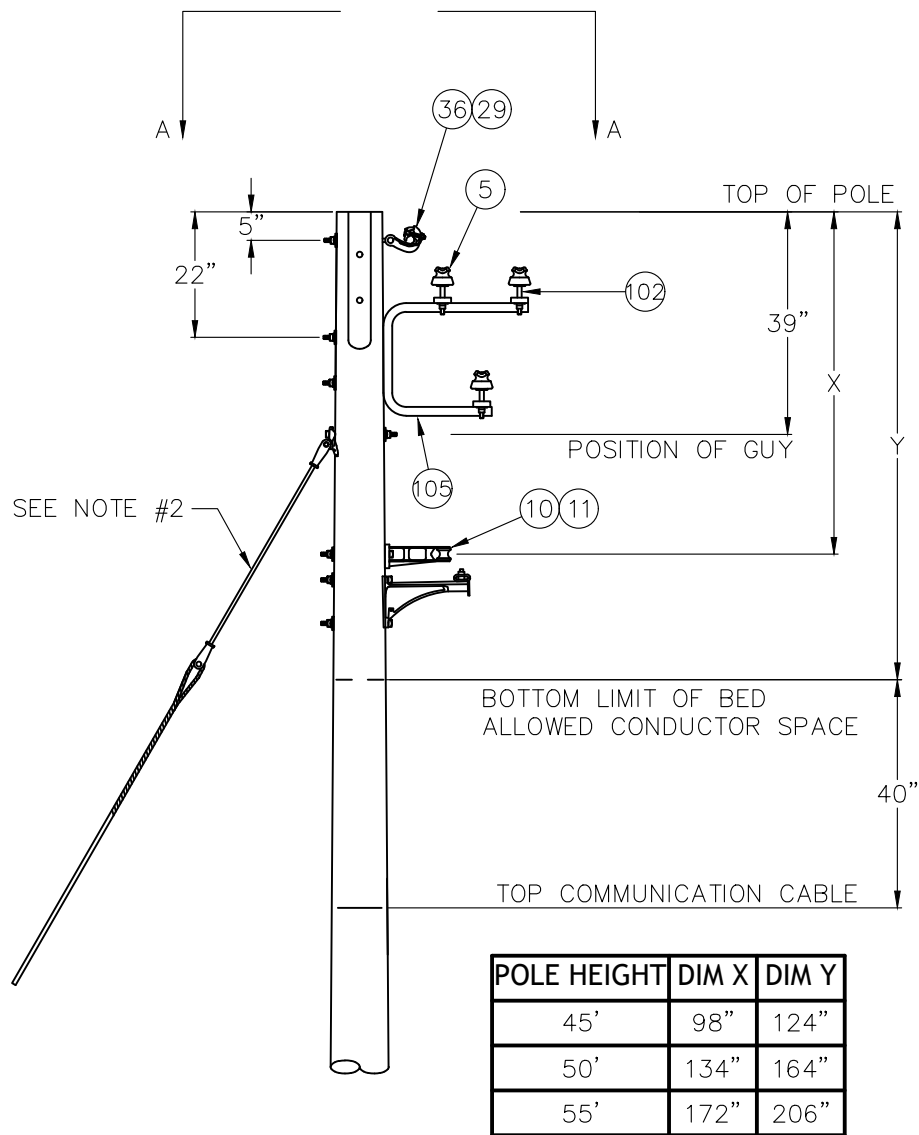
DISTRIBUTION STANDARDS

THREE  $\Phi$  POLE 7°-45°

DATE: 03/13/19 DWG. NO.: 110302

DWN BY: CC APP. BY:

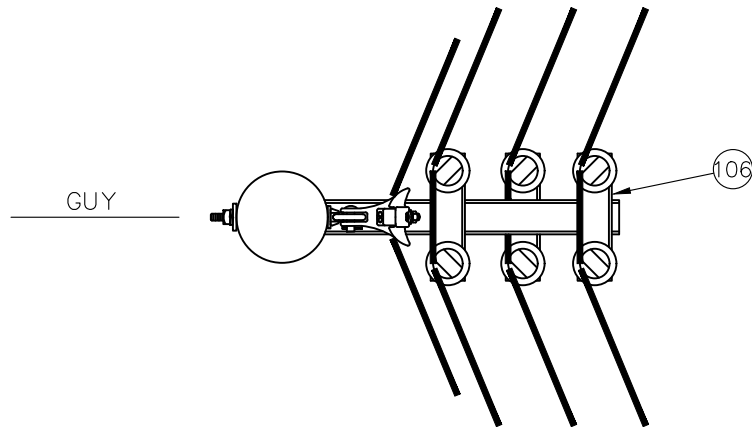
SCALE: NONE SHEET 2 OF 2



**NOTES**

- 1. NEUTRAL ATTACHMENT MAY BE LOWER DEPENDING ON SAG OF CONDUCTOR INSTALLED.
- 2. IF GUY IS USED, LOCATION OF GUY MAY BE MOVED DEPENDING ON SIZE OF CONDUCTOR.

|                                  |                  |
|----------------------------------|------------------|
| <b>BURLINGTON ELECTRIC DEPT.</b> |                  |
| <b>DISTRIBUTION STANDARDS</b>    |                  |
| <b>SPACER THREE Ø POLE</b>       |                  |
| <b>30° - 45°</b>                 |                  |
| DATE: 03/13/19                   | DWG. NO.: 110401 |
| DWN BY: RG                       | APP. BY:         |
| SCALE: NONE                      | SHEET 1 OF 2     |



VIEW A-A

|                                  |                  |
|----------------------------------|------------------|
| BURLINGTON ELECTRIC DEPT.        |                  |
| DISTRIBUTION STANDARDS           |                  |
| SPACER THREE Ø POLE<br>30° - 45° |                  |
| DATE: 04/04/17                   | DWG. NO.: 110402 |
| DWN BY: RG                       | APP. BY:         |
| SCALE: NONE                      | SHEET 2 OF 2     |



MATERIAL LIST

| <u>ITEM</u> | <u>QUANTITY</u> | <u>DESCRIPTION</u>          | <u>STOCK CODE</u> |         |       |
|-------------|-----------------|-----------------------------|-------------------|---------|-------|
| 5           | 6               | PIN (SADDLE BACK) INSULATOR | PLH               | INP     | 00010 |
| 10          | 1               | NEUTRAL BRACKET             | PLH               | BKT     | 00160 |
| 11          | 1               | SPOOL INSULATOR             | PLH               | INL     | 00020 |
| 14          | 5               | 5/8" MACHINE BOLT COMBO     | -                 | GENERAL | STOCK |
| 29          | 1               | EYELET                      | -                 | GENERAL | STOCK |
| 36          | 2               | ANGLE CLAMP                 | CLA               | ANG     | 00030 |
| 102         | 6               | INSULATOR PIN               | -                 | GENERAL | STOCK |
| 105         | 1               | SPACER CABLE ANGLE BRACKET  | -                 | NON     | STOCK |
| 106         | 3               | DOUBLE INSULATOR PLATE      | PLH               | MSC     | 00030 |
| 108         | AS REQUIRED     | TIE WIRE                    | ECW               | TIE     | 00020 |

OPTIONAL EQUIPMENT

| <u>ITEM</u> | <u>QUANTITY</u> | <u>DESCRIPTION</u>      | <u>STOCK CODE</u> |         |       |
|-------------|-----------------|-------------------------|-------------------|---------|-------|
| 14          | 2               | 5/8" MACHINE BOLT COMBO | -                 | GENERAL | STOCK |
| 22          | 1               | HENDRIX BRACKET         | PLH               | HDX     | 00100 |
| 29          | 1               | EYELET                  | -                 | GENERAL | STOCK |

BURLINGTON ELECTRIC DEPT.

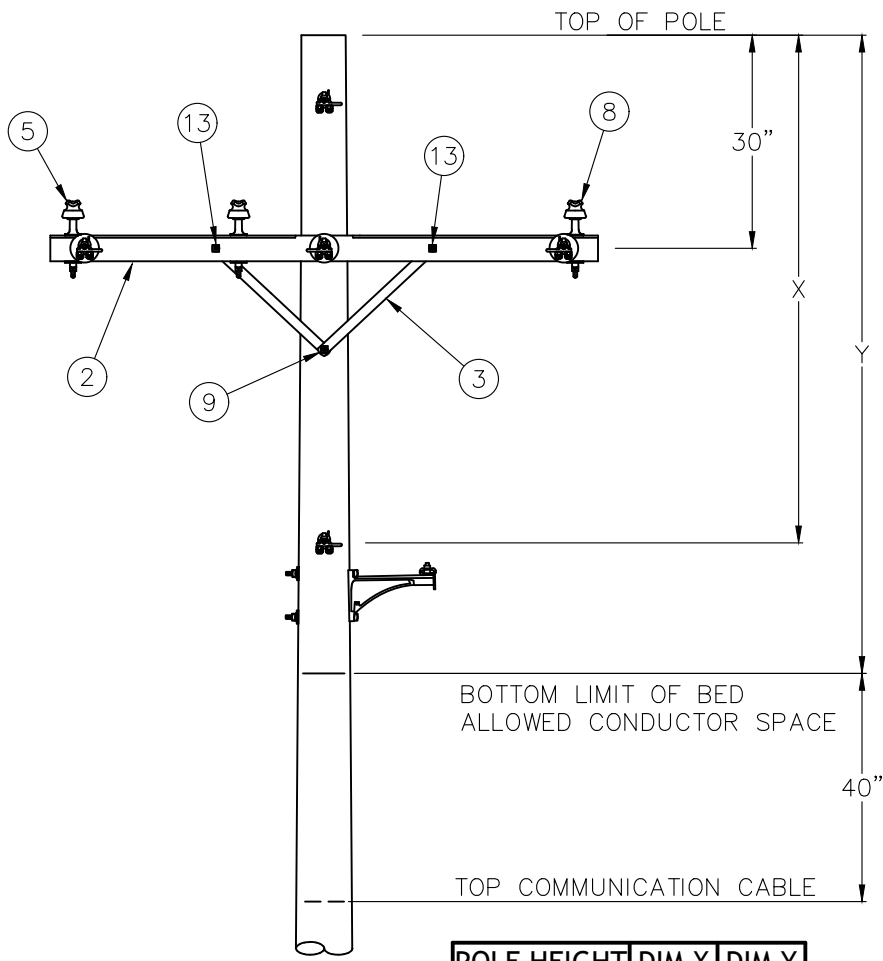
DISTRIBUTION STANDARDS

THREE  $\Phi$  POLE 45°-90°

DATE: 03/13/19 DWG. NO.: 110403

DWN BY: CC APP. BY:

SCALE: NONE SHEET 3 OF 3



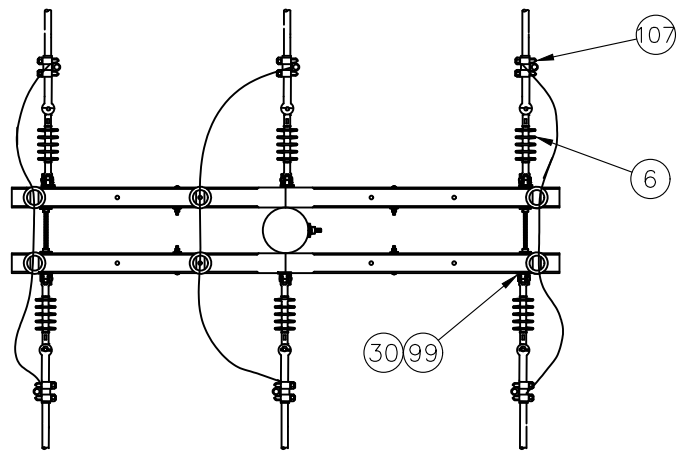
| POLE HEIGHT | DIM X | DIM Y |
|-------------|-------|-------|
| 45'         | 98"   | 124"  |
| 50'         | 134"  | 164"  |
| 55'         | 172"  | 206"  |

**NOTES**

1. NEUTRAL ATTACHMENT MAY BE LOWER DEPENDING ON SAG OF CONDUCTOR INSTALLED.
2. IF GUY IS USED, LOCATION OF GUY MAY BE MOVED DEPENDING ON SIZE OF CONDUCTOR.
3. ALL HARDWARE TO BE 5/8"Ø UNLESS OTHERWISE NOTED.

**BURLINGTON ELECTRIC DEPT.**  
**DISTRIBUTION STANDARDS**  
**SPACER THREE Ø POLE**  
**DOUBLE DEADEND**

|                |                  |
|----------------|------------------|
| DATE: 03/13/19 | DWG. NO.: 110501 |
| DWN BY: RG     | APP. BY:         |
| SCALE: NONE    | SHEET 1 OF 2     |



BURLINGTON ELECTRIC DEPT.

DISTRIBUTION STANDARDS

SPACER THREE Ø POLE  
DOUBLE DEADEND

DATE: 03/13/19

DWG. NO.: 110502

DWN BY: RG

APP. BY:

SCALE: NONE

SHEET 2 OF 2

MATERIAL LIST

| <u>ITEM</u> | <u>QUANTITY</u> | <u>DESCRIPTION</u>            | <u>STOCK CODE</u> |         |       |
|-------------|-----------------|-------------------------------|-------------------|---------|-------|
| 2           | 2               | CROSSARM, 8 FOOT              | PLH               | XAW     | 00030 |
| 3           | 4               | CROSSARM BRACE - 28" STEEL    | PLH               | BRS     | 00010 |
| 4           | 1               | POLE TOP PIN, 20"             | PLH               | PIN     | 00010 |
| 5           | 5               | PIN (SADDLE BACK) INSULATOR   | PLH               | INP     | 00010 |
| 6           | 6               | SUSPENSION INSULATOR          | PLH               | IND     | 00010 |
| 8           | 4               | CROSSARM PIN, 6"              | -                 | GENERAL | STOCK |
| 9           | 2               | 1/2" LAG BOLT & SPRING WASHER | -                 | GENERAL | STOCK |
| 13          | 4               | 3/8" CARRIAGE BOLT COMBO      | -                 | GENERAL | STOCK |
| 14          | 3               | 5/8" MACHINE BOLT COMBO       | -                 | GENERAL | STOCK |
| 16          | 6               | LIGHTING ARRRESTER            | ARR               | RIS     | 00030 |
| 29          | 1               | EYELET                        | -                 | GENERAL | STOCK |
| 30          | 7               | EYE NUT                       | -                 | GENERAL | STOCK |
| 35          | 8               | DEADEND CLAMP - #6 TO 2/0     | CLA               | DEA     | 00010 |
| 99          | 3               | 5/8" DOUBLE ARMING BOLT COMBO | -                 | GENERAL | STOCK |
| 108         | AS REQUIRED     | TIE WIRE                      | ECW               | TIE     | 00020 |

OPTIONAL EQUIPMENT

| <u>ITEM</u> | <u>QUANTITY</u> | <u>DESCRIPTION</u>      | <u>STOCK CODE</u> |         |       |
|-------------|-----------------|-------------------------|-------------------|---------|-------|
| 14          | 3               | 5/8" MACHINE BOLT COMBO | -                 | GENERAL | STOCK |
| 22          | 1               | HENDRIX BRACKET         | PLH               | HDX     | 00100 |
| 29          | 1               | EYELET                  | -                 | GENERAL | STOCK |

BURLINGTON ELECTRIC DEPT.

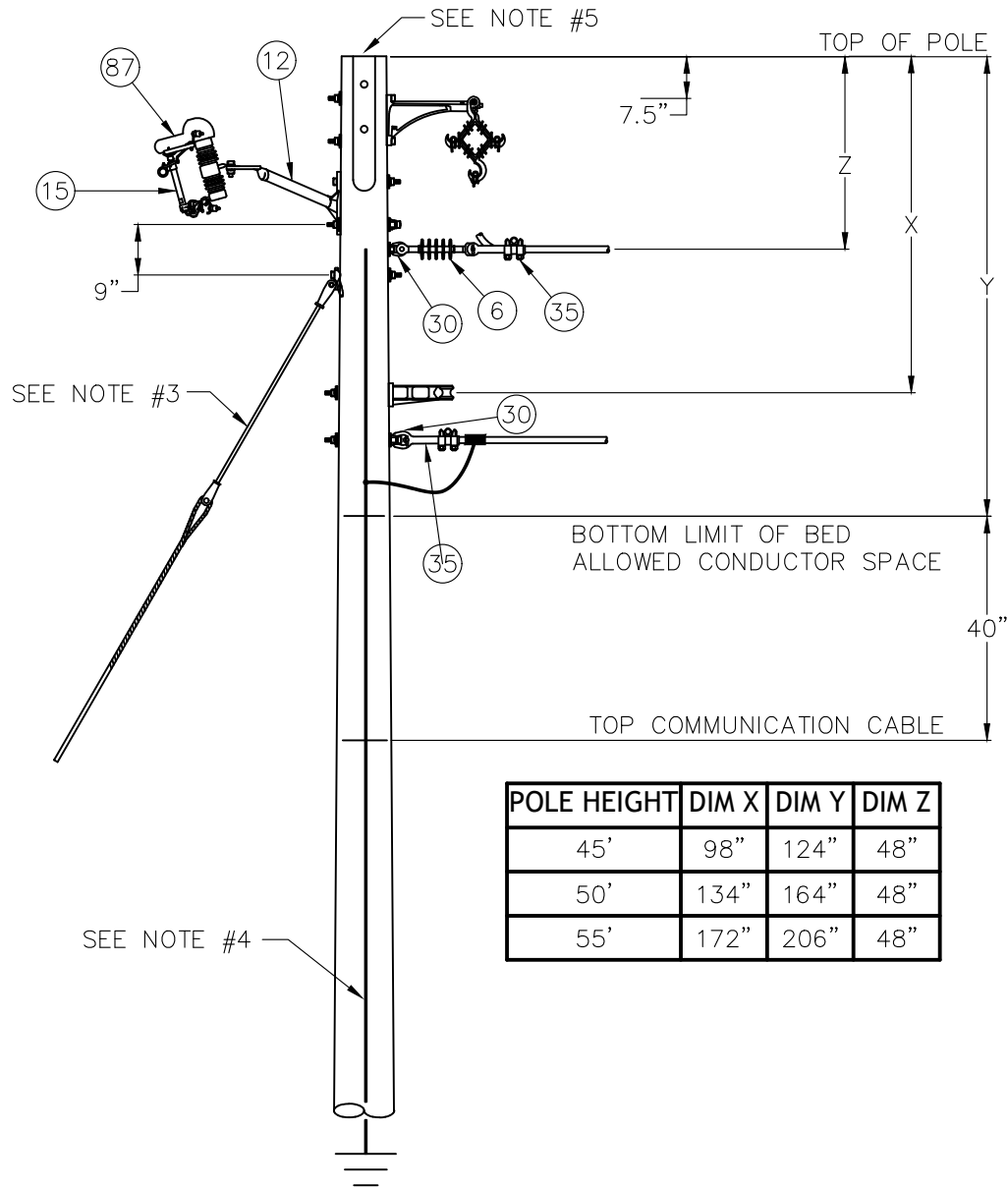
DISTRIBUTION STANDARDS

THREE  $\Phi$  POLE DOUBLE  
DEADEND

DATE: 03/13/19 DWG. NO.: 110503

DWN BY: CC APP. BY:

SCALE: NONE SHEET 3 OF 3



**NOTES**

1. NEUTRAL ATTACHMENT MAY BE LOWER DEPENDING ON SAG OF CONDUCTOR INSTALLED.
2. ALL HARDWARE TO BE 5/8"Ø UNLESS OTHERWISE NOTED.
3. GUY WIRE SHOWN FOR LOCATION ONLY. SEE SECTION 0600 FOR GUYING INFORMATION.
4. SEE DRAWING 0704 FOR GROUNDING.
5. FOR THREE PHASE SPACER CABLE CONSTRUCTION, SEE STANDARD 1102.

**BURLINGTON ELECTRIC DEPT.**

**DISTRIBUTION STANDARDS**

**SPACER THREE Ø POLE  
WITH SINGLE Ø TAP**

DATE: 03/13/19

DWG. NO.: 110601

DWN BY: RG

APP. BY:

SCALE: NONE

SHEET 1 OF 1

MATERIAL LIST

| <u>ITEM</u> | <u>QUANTITY</u> | <u>DESCRIPTION</u>              | <u>STOCK CODE</u> |         |       |
|-------------|-----------------|---------------------------------|-------------------|---------|-------|
| 6           | 2               | SUSPENSION INSULATOR            | PLH               | IND     | 00010 |
| 12          | 1               | CLOVERLEAF ARM                  | PLH               | BKT     | 00030 |
| 14          | 8               | 5/8" MACHINE BOLT COMBO         | -                 | GENERAL | STOCK |
| 15          | 1               | FUSED CUTOUT                    | SWI               | CUT     | 00070 |
| 87          | 1               | CUTOUT ANIMAL GUARD             | PLH               | WLP     | 00060 |
| 22          | 1               | HENDRIX BRACKET                 | PLH               | HDX     | 00100 |
| 30          | 2               | EYE NUT                         | -                 | GENERAL | STOCK |
| 35          | 2               | DEADEND CLAMP - #6 TO 2/0       | CLA               | DEA     | 00010 |
|             |                 | DEADEND CLAMP - #4 TO 556 KCMIL | CLA               | DEA     | 00050 |
| 103         | AS REQUIRED     | 15KV SPACER WITH TIES           | PLH               | HDX     | 00080 |

OPTIONAL EQUIPMENT

| <u>ITEM</u> | <u>QUANTITY</u> | <u>DESCRIPTION</u>          | <u>STOCK CODE</u> |         |       |
|-------------|-----------------|-----------------------------|-------------------|---------|-------|
| 5           | 1               | PIN (SADDLE BACK) INSULATOR | PLH               | INP     | 00010 |
| 102         | 1               | INSULATOR PIN               | -                 | GENERAL | STOCK |
| 108         | AS REQUIRED     | TIE WIRE                    | ECW               | TIE     | 00020 |

BURLINGTON ELECTRIC DEPT.

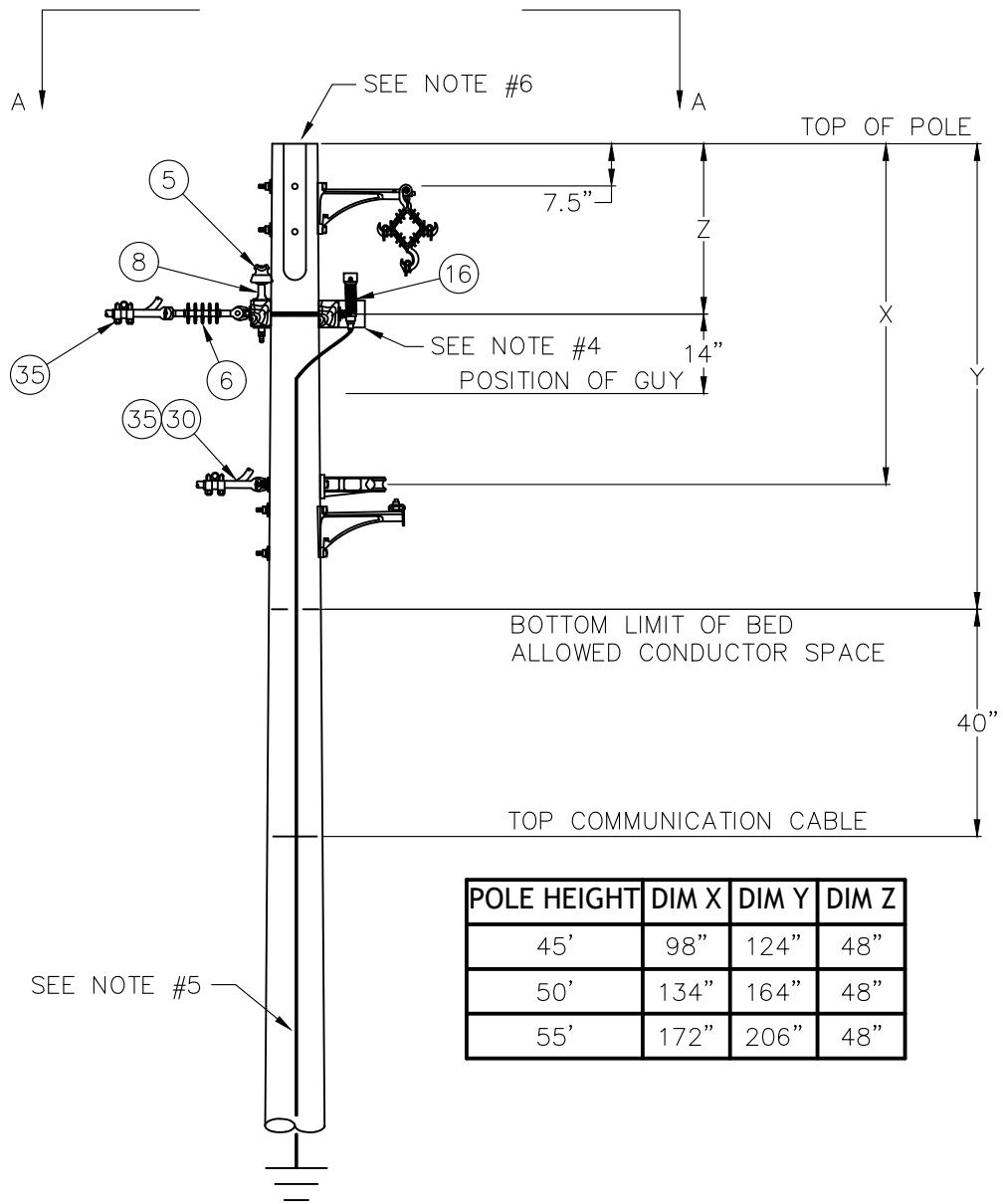
DISTRIBUTION STANDARDS

THREE  $\Phi$  POLE WITHSINGLE  $\Phi$  TAP

DATE: 03/13/19 DWG. NO.: 110602

DWN BY: CC APP. BY:

SCALE: NONE SHEET 2 OF 2



| POLE HEIGHT | DIM X | DIM Y | DIM Z |
|-------------|-------|-------|-------|
| 45'         | 98"   | 124"  | 48"   |
| 50'         | 134"  | 164"  | 48"   |
| 55'         | 172"  | 206"  | 48"   |

SEE NOTE #5

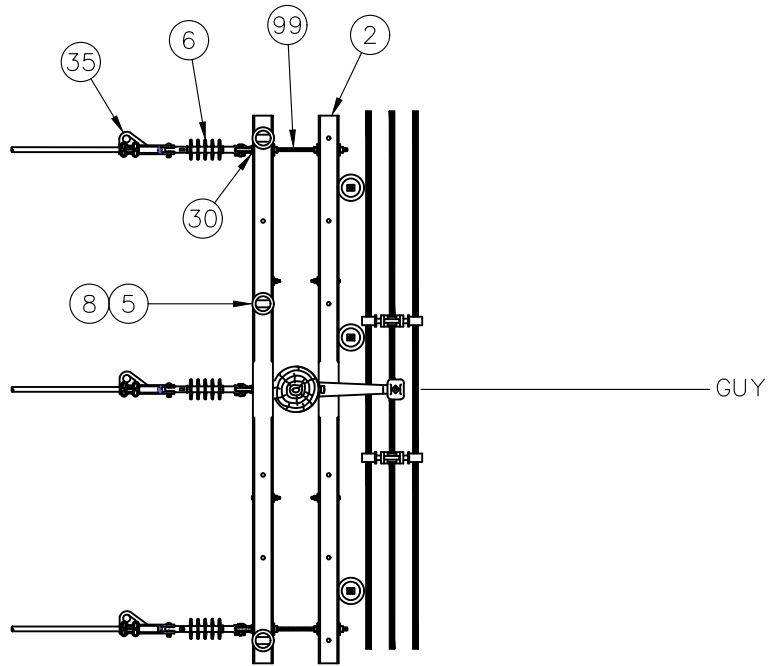
GUYS NOT SHOWN FOR CLARITY OF VIEW  
SEE SHEET 2

**NOTES**

1. NEUTRAL ATTACHMENT MAY BE LOWER DEPENDING ON SAG OF CONDUCTOR INSTALLED.
2. LOCATION OF GUY MAY BE MOVED DEPENDING ON SIZE OF CONDUCTOR.
3. ALL MOUNTING HARDWARE TO BE 5/8"Ø UNLESS OTHERWISE NOTED.
4. FOR 556 PRIMARY CONSTRUCTION USE EXTRA ARM FOR DEADENDS. ADD (2) WASHER SPACERS BETWEEN CROSSARMS.
5. SEE DRAWING 0704 FOR GROUNDING.
6. FOR THREE PHASE SPACER CABLE CONSTRUCTION, SEE STANDARD 1102.

**BURLINGTON ELECTRIC DEPT.**  
**DISTRIBUTION STANDARDS**  
**SPACER THREE Ø POLE**  
**WITH THREE Ø TAP**

|                |                  |
|----------------|------------------|
| DATE: 03/13/19 | DWG. NO.: 110701 |
| DWN BY: RG     | APP. BY:         |
| SCALE: NONE    | SHEET 1 OF 2     |



VIEW A-A

**BURLINGTON ELECTRIC DEPT.**  
**DISTRIBUTION STANDARDS**  
**SPACER THREE Ø POLE**  
**WITH THREE Ø TAP**

|                |                  |
|----------------|------------------|
| DATE: 04/04/17 | DWG. NO.: 110702 |
| DWN BY: RG     | APP. BY:         |
| SCALE: NONE    | SHEET 2 OF 2     |



MATERIAL LIST

| <u>ITEM</u> | <u>QUANTITY</u> | <u>DESCRIPTION</u>              | <u>STOCK CODE</u> |         |       |
|-------------|-----------------|---------------------------------|-------------------|---------|-------|
| 2           | 2               | CROSSARM, 8 FOOT                | PLH               | XAW     | 00030 |
| 3           | 4               | CROSSARM BRACE - 28" STEEL      | PLH               | BRS     | 00010 |
| 5           | 3               | PIN (SADDLE BACK) INSULATOR     | PLH               | INP     | 00010 |
| 6           | 3               | SUSPENSION INSULATOR            | PLH               | IND     | 00010 |
| 8           | 3               | CROSSARM PIN, 6"                | -                 | GENERAL | STOCK |
| 9           | 2               | 1/2" LAG BOLT & SPRING WASHER   | -                 | GENERAL | STOCK |
| 13          | 4               | 3/8" CARRIAGE BOLT COMBO        | -                 | GENERAL | STOCK |
| 14          | 3               | 5/8" MACHINE BOLT COMBO         | -                 | GENERAL | STOCK |
| 16          | 3               | LIGHTING ARRESTER               | ARR               | RIS     | 00030 |
| 29          | 3               | EYELET                          | -                 | GENERAL | STOCK |
| 30          | 1               | EYE NUT                         | -                 | GENERAL | STOCK |
| 35          | 4               | DEADEND CLAMP - #6 TO 2/0       | CLA               | DEA     | 00010 |
|             |                 | DEADEND CLAMP - #4 TO 556 KCMIL | CLA               | DEA     | 00050 |
| 99          | 3               | 5/8" DOUBLE ARMING BOLT COMBO   | -                 | GENERAL | STOCK |
| 108         | AS REQUIRED     | TIE WIRE                        | ECW               | TIE     | 00020 |

OPTIONAL EQUIPMENT

| <u>ITEM</u> | <u>QUANTITY</u> | <u>DESCRIPTION</u>          | <u>STOCK CODE</u> |         |       |
|-------------|-----------------|-----------------------------|-------------------|---------|-------|
| 5           | AS REQUIRED     | PIN (SADDLE BACK) INSULATOR | PLH               | INP     | 00010 |
| 8           | AS REQUIRED     | CROSSARM PIN, 6"            | -                 | GENERAL | STOCK |
| 14          | 2               | 5/8" MACHINE BOLT COMBO     | -                 | GENERAL | STOCK |
| 15          | 3               | FUSED CUTOUT                | SWI               | CUT     | 00070 |

BURLINGTON ELECTRIC DEPT.

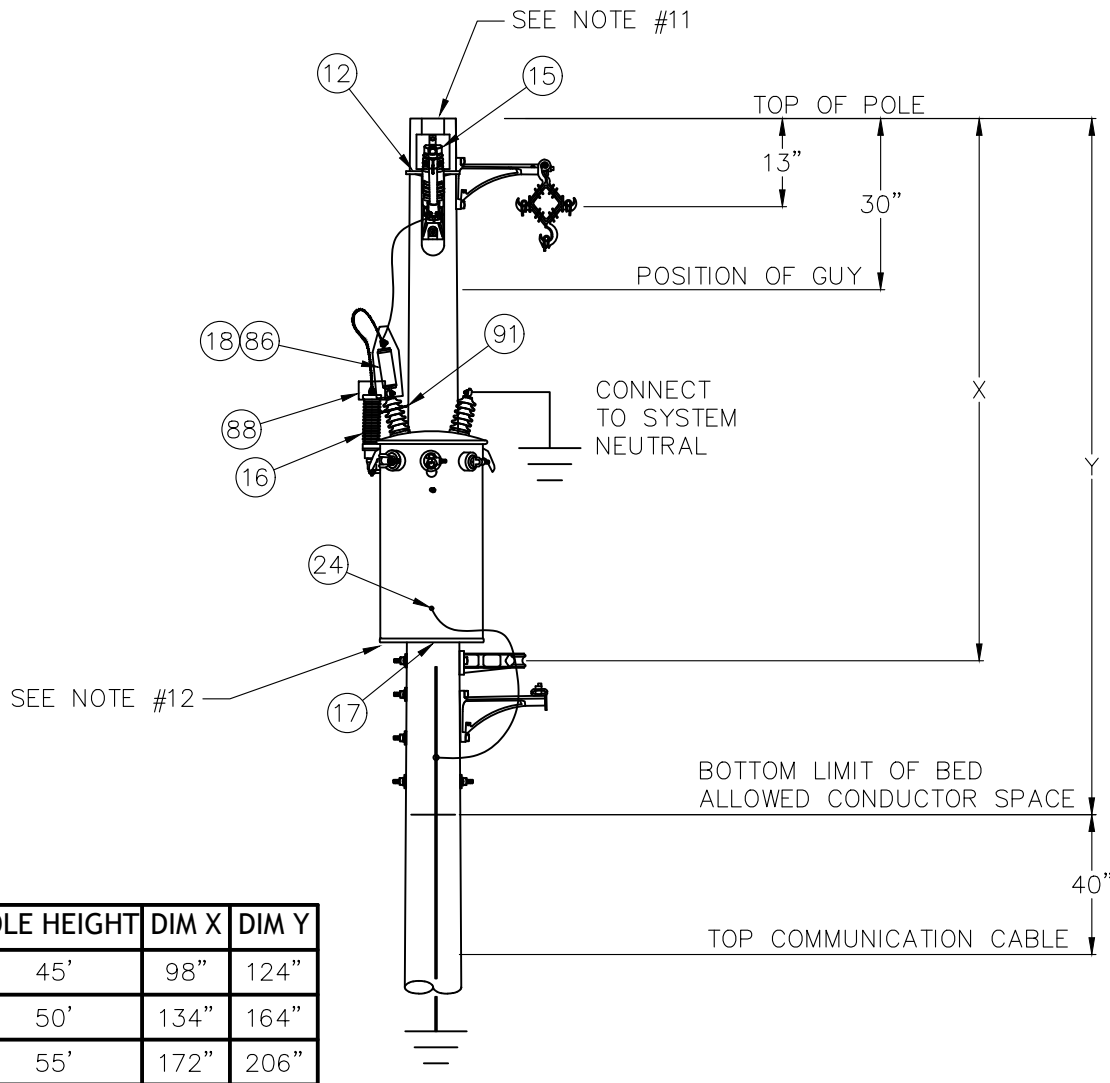
DISTRIBUTION STANDARDS

THREE  $\Phi$  POLE WITHTHREE  $\Phi$  TAP

DATE: 03/13/19 DWG. NO.: 110703

DWN BY: CC APP. BY:

SCALE: NONE SHEET 3 OF 3



| POLE HEIGHT | DIM X | DIM Y |
|-------------|-------|-------|
| 45'         | 98"   | 124"  |
| 50'         | 134"  | 164"  |
| 55'         | 172"  | 206"  |

**NOTES**

1. NEUTRAL ATTACHMENT MAY BE LOWER DEPENDING ON SAG OF CONDUCTOR INSTALLED.
2. FIELD CONDITIONS WILL GOVERN EXACT LOCATION OF TRANSFORMER (DRAWING SHOWS THE LOWEST POSSIBLE LOCATION).
3. TRANSFORMERS LARGER THAN 50kVA REQUIRE 3/4" HARDWARE.
4. THE PREFERRED LOCATION OF THE ARRESTER IS ON THE TRANSFORMER TANK. WIRE TO LOAD SIDE OF CUTOUT.
5. USE ANIMAL GUARD ON ARRESTER AND TRANSFORMER BUSHINGS (TOP MOUNTED BUSHING TRANSFORMERS).
6. PRIMARY AND GROUND CONNECTIONS WILL USE #2 STRANDED COPPER WITH 600V INSULATION.
7. STREET LIGHT MAY BE MOUNTED WITHIN 12" OF COMMUNICATIONS AS LONG AS LIGHT IS GROUNDED.
8. IF GUY IS USED, LOCATION OF GUY MAY BE MOVED DEPENDING ON SIZE OF CONDUCTOR.
9. SEE DRAWING 0704 FOR GROUNDING.
10. ALL MOUNTING HARDWARE TO BE 5/8"Ø UNLESS OTHERWISE NOTED.
11. FOR THREE PHASE SPACER CABLE CONSTRUCTION, SEE STANDARD 1102.
12. IF SPACING REQUIRES, BOTTOM OF TRANSFORMER CAN BE NO LESS THAN 30" FROM TOP COMMUNICATION CABLE.

|   |                  |
|---|------------------|
| <b>BURLINGTON ELECTRIC DEPT.</b>                            |                  |
| <b>DISTRIBUTION STANDARDS</b>                               |                  |
| <b>SPACER THREE Ø POLE WITH TRANSFORMER &amp; SECONDARY</b> |                  |
| DATE: 03/13/19  | DWG. NO.: 110801 |
| DWN BY: RG  | APP. BY:         |
| SCALE: NONE   | SHEET 1 OF 1     |

MATERIAL LIST

| <u>ITEM</u> | <u>QUANTITY</u> | <u>DESCRIPTION</u>                  | <u>STOCK CODE</u> |          |       |
|-------------|-----------------|-------------------------------------|-------------------|----------|-------|
| 12          | 1               | CLOVERLEAF ARM                      | PLH               | BKT      | 00030 |
| 14          | 7               | 5/8" MACHINE BOLT COMBO             | -                 | GENERAL  | STOCK |
| 15          | 1               | FUSED CUTOUT                        | SWI               | CUT      | 00070 |
| 16          | 1               | LIGHTING ARRESTER                   | ARR               | RIS      | 00030 |
| 17          | 1               | TRANSFORMER, POLE TYPE              | SEE               | MATERIAL | LIST  |
| 18          | 1               | CURRENT LIMITING FUSE (40CLF)       | FUS               | CLF      | 00050 |
|             |                 | CURRENT LIMITING FUSE (25CLF)       | FUS               | CLF      | 00060 |
|             |                 | CURRENT LIMITING FUSE (12CLF)       | FUS               | CLF      | 00040 |
| 24          | 1               | GROUND LUG                          | GRD               | CON      | -     |
| 86          | 1               | TRANSFORMER ANIMAL GUARD            | PLH               | WLP      | 00080 |
| 87          | 1               | CUTOUT ANIMAL GUARD                 | PLH               | WLP      | 00060 |
| 88          | 1               | LIGHTING ARRESTER ANIMAL GUARD      | PLH               | WLP      | 00040 |
| 91          | 1               | STATIC GUARD PROTECTOR - ZAP SHIELD | PLH               | WLP      | 00070 |

OPTIONAL EQUIPMENT

| <u>ITEM</u> | <u>QUANTITY</u> | <u>DESCRIPTION</u>      | <u>STOCK CODE</u> |         |       |
|-------------|-----------------|-------------------------|-------------------|---------|-------|
| 14          | 3               | 5/8" MACHINE BOLT COMBO | -                 | GENERAL | STOCK |
| 22          | 1               | HENDRIX BRACKET         | PLH               | HDX     | 00100 |
| 29          | 1               | EYELET                  | -                 | GENERAL | STOCK |

BURLINGTON ELECTRIC DEPT.

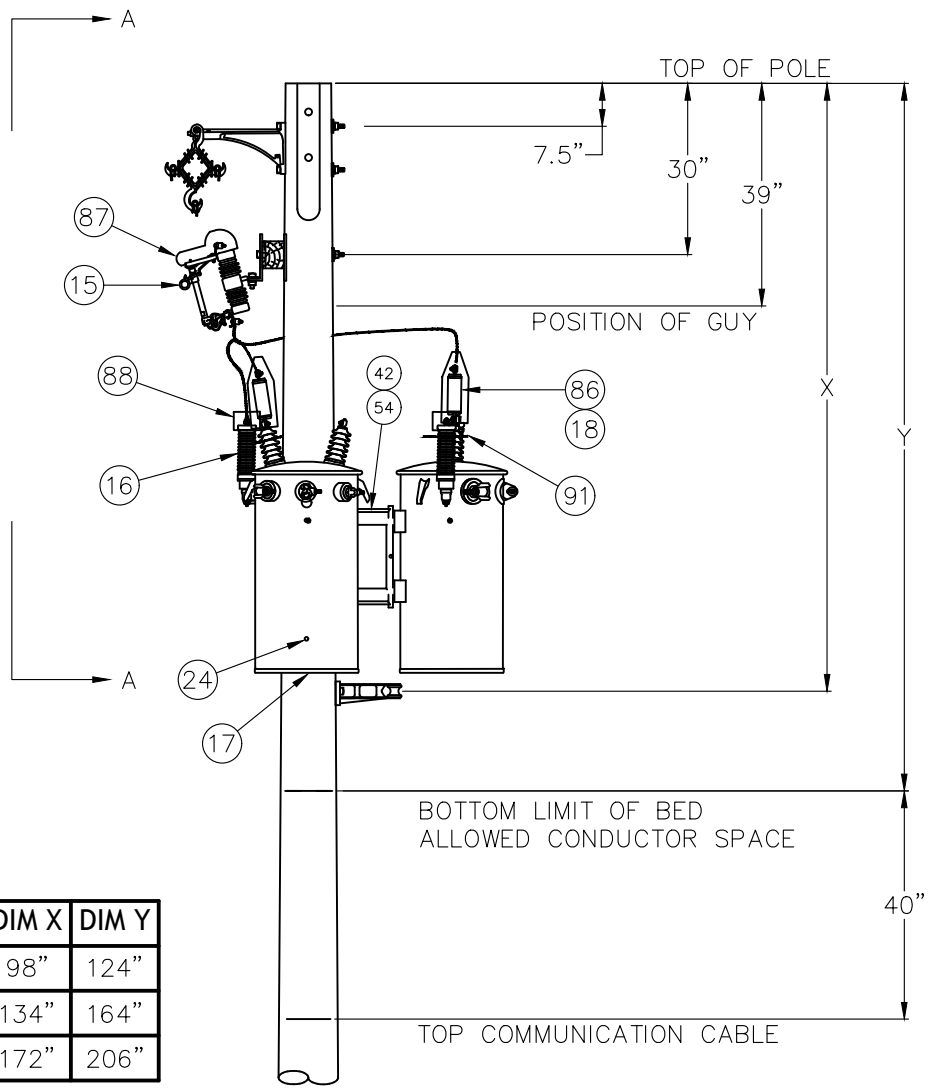
DISTRIBUTION STANDARDS

THREE  $\Phi$  POLE WITH  
TRANSFORMER & SECONDARY

DATE: 03/13/19 DWG. NO.: 110802

DWN BY: RG APP. BY:

SCALE: NONE SHEET 2 OF 2



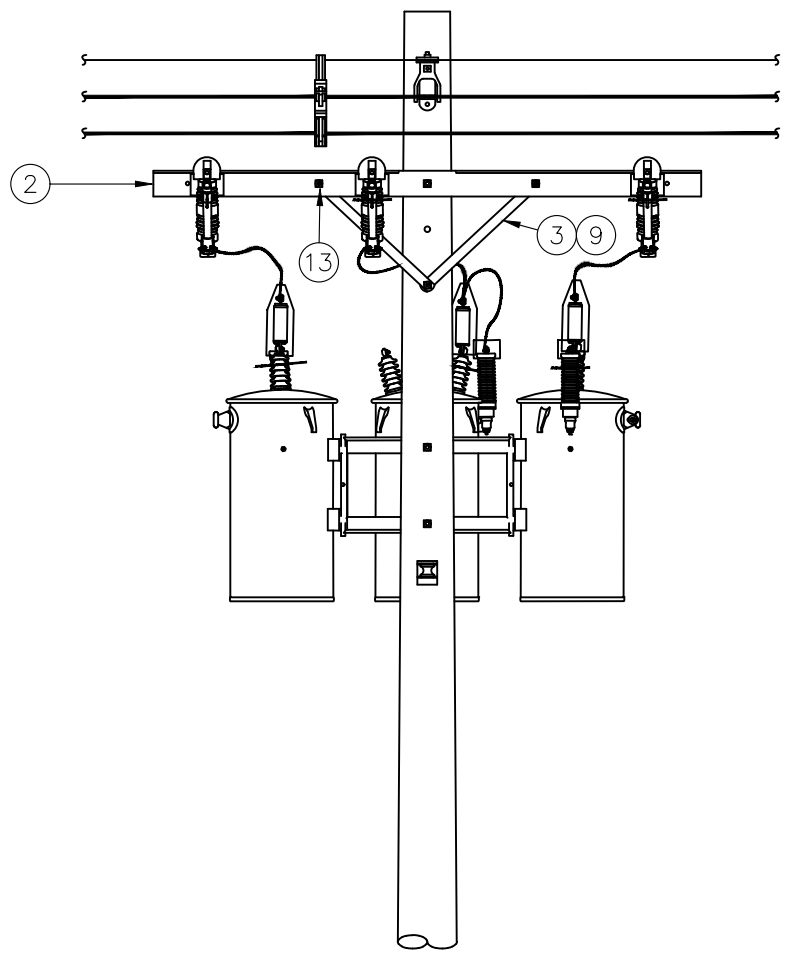
| POLE HEIGHT | DIM X | DIM Y |
|-------------|-------|-------|
| 45'         | 98"   | 124"  |
| 50'         | 134"  | 164"  |
| 55'         | 172"  | 206"  |

**NOTES**

1. NEUTRAL ATTACHMENT MAY BE LOWER DEPENDING ON SAG OF CONDUCTOR INSTALLED.
2. FIELD CONDITIONS WILL GOVERN EXACT LOCATION OF TRANSFORMER.
3. TRANSFORMERS LARGER THAN 50kVA REQUIRE 3/4" HARDWARE.
4. THE PREFERRED LOCATION OF THE ARRESTER IS ON THE TRANSFORMER TANK. WIRE TO LOAD SIDE OF CUTOUT.
5. USE ANIMAL GUARD ON ARRESTER AND TRANSFORMER BUSHINGS (TOP MOUNTED BUSHING TRANSFORMERS).
6. PRIMARY AND GROUND CONNECTIONS WILL USE #2 STRANDED COPPER WITH 600V INSULATION.
7. STREET LIGHT MAY BE MOUNTED WITHIN 12" OF COMMUNICATIONS AS LONG AS LIGHT IS GROUNDED.
8. IF GUY IS USED, LOCATION OF GUY MAY BE MOVED DEPENDING ON SIZE OF CONDUCTOR.
9. SEE DRAWING 0704 FOR GROUNDING.
10. ALL HARDWARE TO BE 5/8"Ø UNLESS OTHERWISE NOTED.

|  |  |
|--|--|
| <b>BURLINGTON ELECTRIC DEPT.</b>                     |  |
| <b>DISTRIBUTION STANDARDS</b>                        |  |
| <b>SPACER THREE Ø POLE<br/>WITH TRANSFORMER BANK</b> |  |

|                |                  |
|----------------|------------------|
| DATE: 03/13/19 | DWG. NO.: 110901 |
| DWN BY: RG     | APP. BY:         |
| SCALE: NONE    | SHEET 1 OF 2     |



VIEW A-A

**BURLINGTON ELECTRIC DEPT.**  
**DISTRIBUTION STANDARDS**  
**SPACER THREE Ø POLE**  
**WITH TRANSFORMER BANK**

|                |                  |
|----------------|------------------|
| DATE: 04/04/17 | DWG. NO.: 110902 |
| DWN BY: RG     | APP. BY:         |
| SCALE: NONE    | SHEET 2 OF 2     |

MATERIAL LIST

| <u>ITEM</u> | <u>QUANTITY</u> | <u>DESCRIPTION</u>                  | <u>STOCK CODE</u> |          |       |
|-------------|-----------------|-------------------------------------|-------------------|----------|-------|
| 2           | 1               | CROSSARM, 8 FOOT                    | PLH               | XAW      | 00030 |
| 3           | 2               | CROSSARM BRACE - 28" STEEL          | PLH               | BRS      | 00010 |
| 9           | 1               | 1/2" LAG BOLT & SPRING WASHER       | -                 | GENERAL  | STOCK |
| 13          | 2               | 3/8" CARRIAGE BOLT COMBO            | -                 | GENERAL  | STOCK |
| 14          | 4               | 5/8" MACHINE BOLT COMBO             | -                 | GENERAL  | STOCK |
| 15          | 3               | FUSED CUTOFF                        | SWI               | CUT      | 00070 |
| 16          | 3               | LIGHTING ARRESTER                   | ARR               | RIS      | 00030 |
| 17          | 3               | TRANSFORMER, POLE TYPE              | SEE               | MATERIAL | LIST  |
| 18          | 3               | CURRENT LIMITING FUSE (40CLF)       | FUS               | CLF      | 00050 |
|             |                 | CURRENT LIMITING FUSE (25CLF)       | FUS               | CLF      | 00060 |
|             |                 | CURRENT LIMITING FUSE (12CLF)       | FUS               | CLF      | 00040 |
| 24          | 3               | GROUND LUG                          | GRD               | CON      | -     |
| 41          | 2               | SCREW ANCHOR                        | PLH               | ANC      | 00230 |
| 54          | 1               | CLUSTER BRACKET 250 KVA OR LARGER   | PLH               | BKX      | 00010 |
|             |                 | CLUSTER BRACKET 100 KVA TO 250 KVA  | PLH               | BKX      | 00030 |
|             |                 | CLUSTER BRACKET 50 KVA OR LESS      | PLH               | BKX      | 00020 |
| 86          | 3               | TRANSFORMER ANIMAL GUARD            | PLH               | WLP      | 00080 |
| 87          | 3               | CUTOFF ANIMAL GUARD                 | PLH               | WLP      | 00060 |
| 88          | 3               | LIGHTING ARRESTER ANIMAL GUARD      | PLH               | WLP      | 00040 |
| 91          | 3               | STATIC GUARD PROTECTOR - ZAP SHIELD | PLH               | WLP      | 00070 |
| 103         | AS REQUIRED     | 15KV SPACER WITH TIES               | PLH               | HDX      | 00080 |

BURLINGTON ELECTRIC DEPT.

DISTRIBUTION STANDARDS

THREE  $\Phi$  POLE WITH  
TRANSFORMER BANK

DATE: 03/13/19 DWG. NO.: 110903

DWN BY: RG APP. BY:

SCALE: NONE SHEET 3 OF 4

OPTIONAL EQUIPMENT

| <u>ITEM</u> | <u>QUANTITY</u> | <u>DESCRIPTION</u>      | <u>STOCK CODE</u> |
|-------------|-----------------|-------------------------|-------------------|
| 14          | 3               | 5/8" MACHINE BOLT COMBO | - GENERAL STOCK   |
| 22          | 1               | HENDRIX BRACKET         | PLH HDX 00100     |
| 29          | 1               | EYELET                  | - GENERAL STOCK   |

BURLINGTON ELECTRIC DEPT.

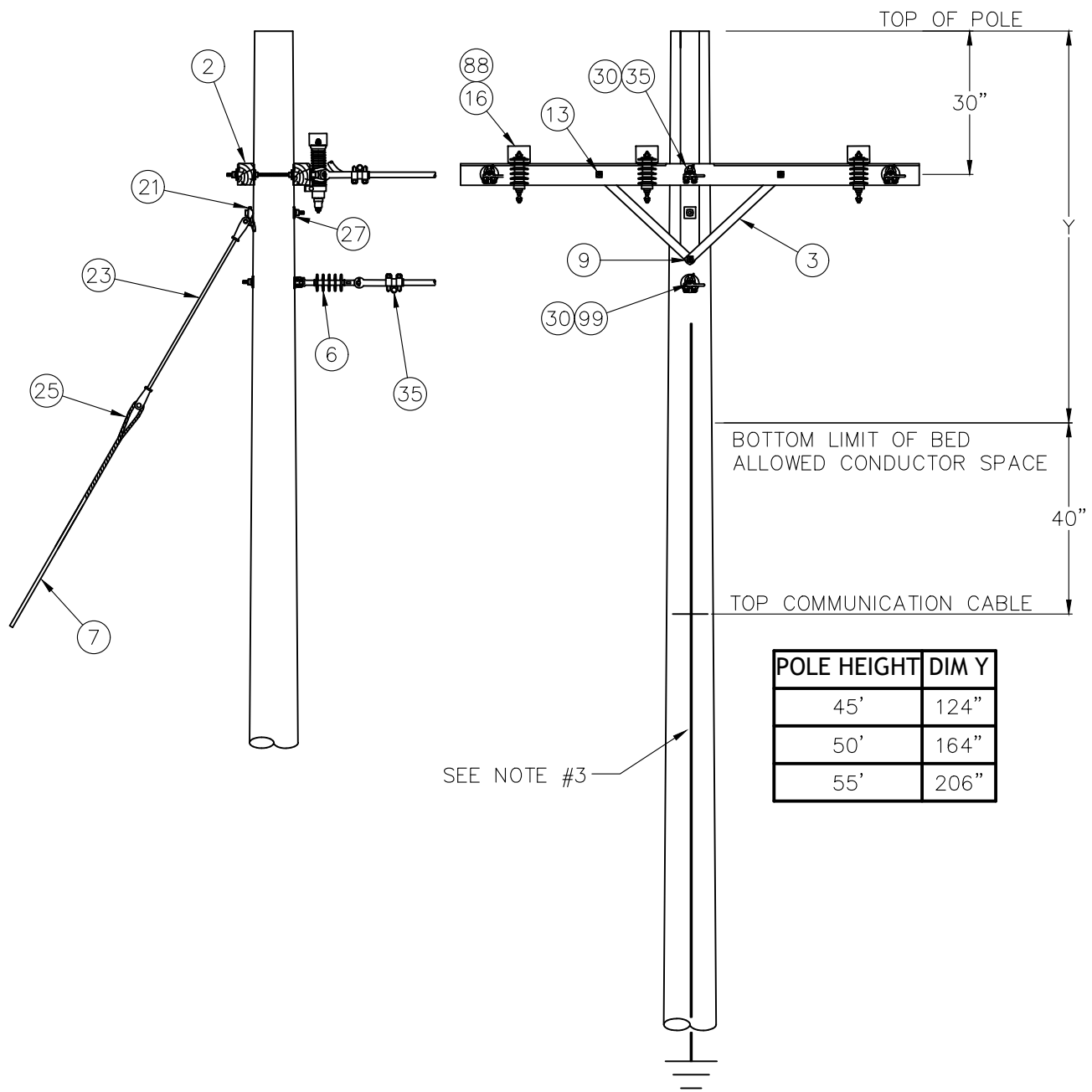
DISTRIBUTION STANDARDS

THREE  $\Phi$  POLE WITH  
TRANSFORMER BANK

DATE: 03/13/19 DWG. NO.: 110904

DWN BY: RG APP. BY:

SCALE: NONE SHEET 4 OF 4



SEE NOTE #3

**NOTES**

1. NEUTRAL ATTACHMENT MAY BE LOWER DEPENDING ON SAG OF CONDUCTOR INSTALLED.
2. LOCATION OF GUY MAY BE MOVED DEPENDING ON SIZE OF CONDUCTOR.
3. SEE DRAWING 0704 FOR GROUNDING.

|  |                  |
|--|------------------|
| <b>BURLINGTON ELECTRIC DEPT.</b>       |                  |
| <b>DISTRIBUTION STANDARDS</b>          |                  |
| <b>SPACER THREE Ø POLE<br/>DEADEND</b> |                  |
| DATE: 03/13/19                         | DWG. NO.: 111001 |
| DWN BY: RG                             | APP. BY:         |
| SCALE: NONE                            | SHEET 1 OF 1     |



MATERIAL LIST

| <u>ITEM</u> | <u>QUANTITY</u> | <u>DESCRIPTION</u>               | <u>STOCK CODE</u> |          |       |
|-------------|-----------------|----------------------------------|-------------------|----------|-------|
| 2           | 2               | CROSSARM, 8 FOOT                 | PLH               | XAW      | 00030 |
| 3           | 4               | CROSSARM BRACE - 28" STEEL       | PLH               | BRS      | 00010 |
| 6           | 3               | SUSPENSION INSULATOR             | PLH               | IND      | 00010 |
| 9           | 1               | 1/2" LAG BOLT & SPRING WASHER    | -                 | GENERAL  | STOCK |
| 13          | 4               | 3/8" CARRIAGE BOLT COMBO         | -                 | GENERAL  | STOCK |
| 14          | 2               | 5/8" MACHINE BOLT COMBO          | -                 | GENERAL  | STOCK |
| 16          | 3               | LIGHTING ARRESTER                | ARR               | RIS      | 00030 |
| 26          | 1               | PARALLEL GROOVE CONNECTOR        | SEE               | MATERIAL | LIST  |
| 30          | 4               | EYE NUT                          | -                 | GENERAL  | STOCK |
| 35          | 4               | DEADEND CLAMP - #6 TO 2/0        | CLA               | DEA      | 00010 |
|             |                 | DEADEND CLAMP - #4 TO 556 KCMIL  | CLA               | DEA      | 00050 |
| 79          | AS REQUIRED     | #2 AWG COPPER, 7 STRAND, 600 V   | ECW               | SCC      | 00150 |
| 82          | 1               | GROUND ROD                       | GRD               | ROD      | 00010 |
| 83          | 1               | PLASTIC/WOOD POLE GROUND MOLDING | PLH               | WOM      | 00010 |
| 84          | AS REQUIRED     | LARGE COPPER STAPLES             | -                 | GENERAL  | STOCK |
| 85          | AS REQUIRED     | SMALL COPPER STAPLES             | -                 | GENERAL  | STOCK |
| 99          | 3               | 5/8" DOUBLE ARMING BOLT COMBO    | -                 | GENERAL  | STOCK |
| 514         | 1               | GROUND ROD CONNECTOR             | GRD               | CON      | 00010 |

BURLINGTON ELECTRIC DEPT.

DISTRIBUTION STANDARDS

SPACER THREE  $\Phi$  POLE

DEADEND

DATE: 03/13/19 DWG. NO.: 111002

DWN BY: CC APP. BY:

SCALE: NONE SHEET 2 OF 2