

INDEX - LIGHTING

DWG NO.	TITLE	REV DATE
2201	STREET LIGHTING - GENERAL	04/09/20
2202	STREET LIGHTING STANDARD SYSTEM	04/14/20
2203	STREET LIGHTING WOOD POLE WITH UNDERGROUND SERVICE	04/14/20
2204	STREET LIGHTING NON-WOODEN POLE WITH COBRAHEAD LUMINAIRE	04/14/20
2205	STREET LIGHTING HISTORIC POLE AND LUMINAIRE	05/08/15
2206	LEASED LIGHTING	04/09/15
2207	STREET LIGHTING DOMUS FIXTURE	04/14/20
2208	UPPER MAIN STREET LIGHTING HISTORIC POLE & LUMINAIRE	04/14/20
2209	STREET LIGHTING - CONCRETE BASE DETAIL	07/22/14
2210	STREET LIGHT WIRING DIAGRAM	05/14/15

BURLINGTON ELECTRIC DEPT.

DISTRIBUTION STANDARDS

LIGHTING

DATE: 04/14/20 DWG. NO.:

DWN BY: RG APP. BY:

SCALE: NONE SHEET 1 OF 1

STREET LIGHTING - GENERAL**STATEMENT OF PURPOSE**

THE STREET LIGHTING POLICY IS TO BE FOLLOWED BY BURLINGTON ELECTRIC DEPARTMENT AND THE CITY OF BURLINGTON WHEN INSTALLING STANDARD STREET LIGHTING POLES AND FIXTURES, AND MAKING DECISIONS ABOUT THE LOCATION OF DECORATIVE POLES, FIXTURES, AND BANNERS THAT ARE ATTACHED TO THE POLES. WHEN CHOOSING STREET LIGHTING, ENERGY EFFICIENCY WILL CONTINUE TO BE A VERY HIGH PRIORITY. BURLINGTON WILL CONTINUE TO BE AWARE OF DARK SKIES GOALS AS A COMPONENT OF LIGHTING POLICY. THIS POLICY WILL INFORM CITIZENS OF THE STANDARDS, GUIDELINES, AND PROCEDURES THAT BURLINGTON ELECTRIC DEPARTMENT EMPLOYS TO SAFELY ILLUMINATE BURLINGTON STREETS, ADJACENT BIKEWAYS, AND PEDESTRIAN WAYS.

RESPONSIBILITY FOR LIGHTING CITY STREETS

BURLINGTON ELECTRIC DEPARTMENT (BED) HAS BEEN TASKED BY THE BURLINGTON CITY COUNCIL WITH THE RESPONSIBILITY TO LIGHT THE ACCEPTED CITY STREETS OF BURLINGTON.

STREET LIGHTING STANDARD

STREET LIGHTING IN BURLINGTON, VERMONT CONFORMS TO THE ILLUMINATING ENGINEERING SOCIETY (IES) RECOMMENDATIONS FOR LIGHTING LEVELS AS DEFINED IN THE ROADWAY LIGHTING DESIGN HANDBOOK (RP-08). AS PROJECTS ARE DESIGNED, BED WILL REFER TO THE CURRENT EDITION OF RP-08.

STREET LIGHTING FIXTURES ARE PURCHASED BASED ON PERFORMANCE, DURABILITY, WORKABILITY, AND COST. WHEN EVALUATING THE PERFORMANCE OF THE STREET LIGHT FIXTURE, BED WILL CREATE A ROAD TEMPLATE AND EVALUATE THE LIGHT LEVEL ON THE STREET, SIDEWALK, AND BEYOND THE SIDEWALKS. THE GOAL OF THE EVALUATION IS TO CHOOSE AN ENERGY EFFICIENT FIXTURE THAT PROVIDES ADEQUATE LIGHTING ON THE STREET AND SIDEWALK WITH THE LOWEST LIGHT SPILL BEYOND THE SIDEWALKS. LED FIXTURES WILL BE THE STANDARD AND SHALL BE RATED WITH THE BACKLIGHT, UPLIGHT, AND GLARE (BUG) SYSTEM WITH COLOR TEMPERATURE OF 3,000K. THE BUG SYSTEM WAS STARTED BY THE IES IN 2005 TO REDUCE STRAY LIGHTING THAT ESCAPES FROM AN OUTDOOR LIGHTING LUMINAIRE.

STANDARD STREET LIGHTING SYSTEM

THE STREET LIGHTING SYSTEM WILL CONSIST OF AN LED COBRA HEAD FIXTURE RATED ACCORDING TO THE BUG SYSTEM AND MOUNTED ON AN EXISTING UTILITY POLE OR ON A NEW WOODEN/FIBERGLASS POLE. IN CASES WHERE COORDINATION WITH BURLINGTON DEPARTMENT OF PUBLIC WORKS (DPW) ALLOWS BED TO AVOID INSTALLING ADDITIONAL POLES, LED FIXTURES (INCLUDING NON-COBRA HEAD LED FIXTURES APPROVED BY BED) MAY ALSO BE INSTALLED ON TRAFFIC POLES. BED WILL SUPPLY POWER VIA AERIAL SERVICE FOR STREETS WITH AERIAL ELECTRICAL CIRCUITS OR VIA UNDERGROUND SERVICE WHERE BED'S ELECTRICAL CIRCUITS ARE UNDERGROUND. BASED ON CURRENT TECHNOLOGY, THE STANDARD SYSTEM IS THE LEAST-COST OPTION AVAILABLE.

DECORATIVE LIGHTING AND BANNERS

THE PLANNING DEPARTMENT SHALL DESIGNATE DECORATIVE LIGHTING DISTRICTS AND BANNER DISTRICTS AND WILL INFORM BED OF SUCH DESIGNATIONS.

FOR DECORATIVE LIGHTING DISTRICTS, BED, WITH ADVICE FROM THE PLANNING DEPARTMENT, WILL SELECT ONE DECORATIVE LIGHTING FIXTURE AND POLE THAT WILL BE USED IN THE GATEWAYS AND ONE IN THE COMMERCIAL AREAS. PRE-EXISTING NON-STANDARD DECORATIVE LIGHTS WILL BE MAINTAINED UNTIL THE STOCK RUNS OUT, AT WHICH POINT THEY WILL BE REPLACED BY THE STANDARD FIXTURE AND POLE SELECTED BY BED, UNLESS A NEW DISTRICT HAS BEEN NAMED.

FOR BANNER DISTRICTS, BANNERS WILL BE AFFIXED TO THE POLES USING MANUFACTURER'S RECOMMENDATIONS. BED WILL INSTALL THE BANNERS AND MAINTAIN THEM. THE CITY SHALL SIGN A WAIVER OF LIABILITY IN REGARDS TO THE BANNERS.

BURLINGTON ELECTRIC DEPT.**DISTRIBUTION STANDARDS****STREET LIGHTING
GENERAL**

DATE: 04/09/20

DWG. NO.: 220101

DWN BY: RG

APP. BY:

SCALE: NONE

SHEET 1 OF 2

STREET LIGHTING - GENERAL

DECORATIVE LIGHTING AND BANNERS (cont.)

BED HAS STANDARD RESIDENTIAL AND COMMERCIAL STREET LIGHTING EQUIPMENT. ALL INCREASED COSTS ABOVE THE STANDARD AMOUNT FOR BOTH EQUIPMENT AND MAINTENANCE OF THE BANNERS AND THE DECORATIVE FIXTURES WILL BE BORNE BY THE CITY. WHEN REQUESTING DECORATIVE STREET LIGHTING FIXTURES AND POLES, THE CITY WILL PAY THE INCREMENTAL COST IN ADVANCE IN COMPLIANCE WITH BED'S STREET LIGHTING TARIFF.

NEW DEVELOPMENT

WHERE NEW DEVELOPMENT CAUSES THE CREATION OF NEW "ACCEPTED CITY STREETS", BED WILL INSTALL A STANDARD LIGHTING SYSTEM.

STREET LIGHTING PROCESS

BED FOLLOWS THE FOLLOWING STREET LIGHTING PROCESS:

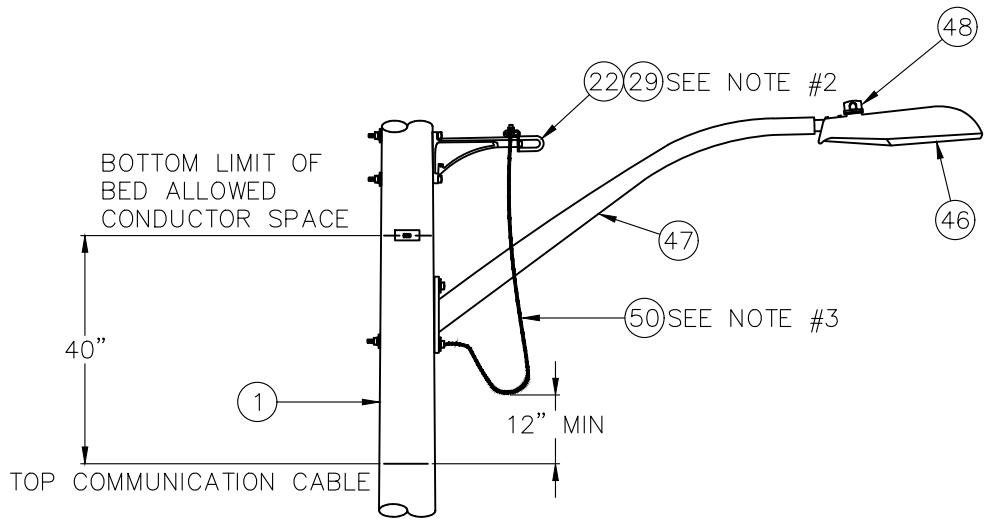
- A) BED MAINTAINS A STREET LIGHTING CAPITAL PLAN THAT LISTS THE STREETS WHERE THE LIGHTING WILL BE UPGRADED/NEW LIGHTS WILL BE INSTALLED TO MEET IES RECOMMENDATIONS. THIS PLAN INCLUDES STREET LIGHTING PROJECTS SPECIFIED BY BED, PROJECTS DRIVEN BY THE CITY/STATE PROJECTS, AND PROJECTS DRIVEN BY BED'S CUSTOMERS REQUESTING THAT LIGHTING LEVELS BE CHECKED.
- B) WHEN A STREET LIGHT FIXTURE FAILS ON A STREET THAT DOES NOT MEET THE IES LIGHTING RECOMMENDATION, THE FIXTURE IS REPLACED WITH AN EQUIVALENT OUTPUT LED COBRA HEAD FIXTURE.
- C) WHEN BED'S ELECTRICAL SYSTEM REBUILD/UPGRADE PROJECT IS UNDERWAY, BED WILL USE THIS OPPORTUNITY TO CHANGE OUT ALL THE LIGHTING AND BRING THE STREET UP TO THE IES RECOMMENDATIONS. THIS MAY INCLUDE REPLACING FIXTURES ON EXISTING POLES OR ADDING NEW POLES AND FIXTURES.
- D) WHEN BED RECEIVES REQUESTS FROM CUSTOMERS TO CHECK THE LIGHTING LEVELS ON A STREET, BED WILL INVESTIGATE THE LIGHTING REQUEST BY PERFORMING A STREET LIGHTING STUDY.

IF THE STUDY INDICATES THE LIGHTING LEVEL ON THE STREET IS BELOW THE IES RECOMMENDATIONS, THE STREET WILL BE ADDED TO BED'S STREET LIGHTING CAPITAL PLAN, AND UPGRADING THE LIGHTING TO MEET IES RECOMMENDATIONS WILL BE IMPLEMENTED AS BUDGET ALLOWS. THIS MAY INCLUDE REPLACING FIXTURES ON EXISTING POLES AND ADDING NEW POLES AND FIXTURES.

IF THE STUDY INDICATES THE LIGHTING LEVEL MEETS THE IES RECOMMENDATIONS, BED SHALL INFORM THE CUSTOMER THAT THE STREET LIGHT IS ADEQUATE AND MEETS THE IES RECOMMENDATIONS.

IF THE STUDY INDICATES THE LIGHTING LEVEL ON THE STREET COULD BE REDUCED AND STILL MEET THE IES RECOMMENDATIONS BY REPLACING LIGHTING FIXTURE(S) WITH LOWER WATTAGE FIXTURE(S), BED SHALL ADD THIS PROJECT TO THE STREET LIGHTING CAPITAL PLAN AND IMPLEMENT IT AS BUDGET ALLOWS.

BURLINGTON ELECTRIC DEPT.	
DISTRIBUTION STANDARDS	
STREET LIGHTING GENERAL	
DATE: 08/14/14	DWG. NO.: 220102
DWN BY: RG	APP. BY:
SCALE: NONE	SHEET 2 OF 2



NOTES:

1. STREET LIGHT BRACKETS MAY BE MOUNTED IN THE NEUTRAL SPACE PROVIDED THE SERVICE CONDUCTOR LOOP IS AT LEAST 12" ABOVE THE COMMUNICATION CONDUCTORS AND THE BRACKET IS GROUNDED.
2. HENDRIX BRACKET (ITEM 22) AND EYELET (ITEM 29) USED ONLY WITH ATTACHED SECONDARIES.
3. BOND BRACKET TO NEUTRAL USING GROUND WIRE.

BURLINGTON ELECTRIC DEPT.	
DISTRIBUTION STANDARDS	
STREET LIGHTING STANDARD SYSTEM	
DATE: 04/14/20	DWG. NO.: 220201
DWN BY: RG	APP. BY:
SCALE: NONE	SHEET 1 OF 1

MATERIAL LIST (STREET LIGHTING ONLY)

<u>ITEM</u>	<u>QUANTITY</u>	<u>DESCRIPTION</u>	<u>STOCK CODE</u>
1	AS REQUIRED	WOOD POLE	SEE MATERIAL LIST
9	AS REQUIRED	1/2" LAG BOLT & SPRING WASHER	- GENERAL STOCK
14	1	5/8" MACHINE BOLT COMBO	- GENERAL STOCK
46	1	LIGHT FIXTURE - LED COBRAHEAD	SEE MATERIAL LIST
47	1	STREET LIGHT BRACKET - 6'	LIG BKT 00020
48	1	PHOTO CONTROL	LIG LED 00031
50	AS REQUIRED	#10-2 AWG COPPER WIRE, 600 V	ECW MCC 00010

OPTIONAL EQUIPMENT

<u>ITEM</u>	<u>QUANTITY</u>	<u>DESCRIPTION</u>	<u>STOCK CODE</u>
22	1	HENDRIX BRACKET	PLH HDX 00100
29	1	EYELET	- GENERAL STOCK

BURLINGTON ELECTRIC DEPT.

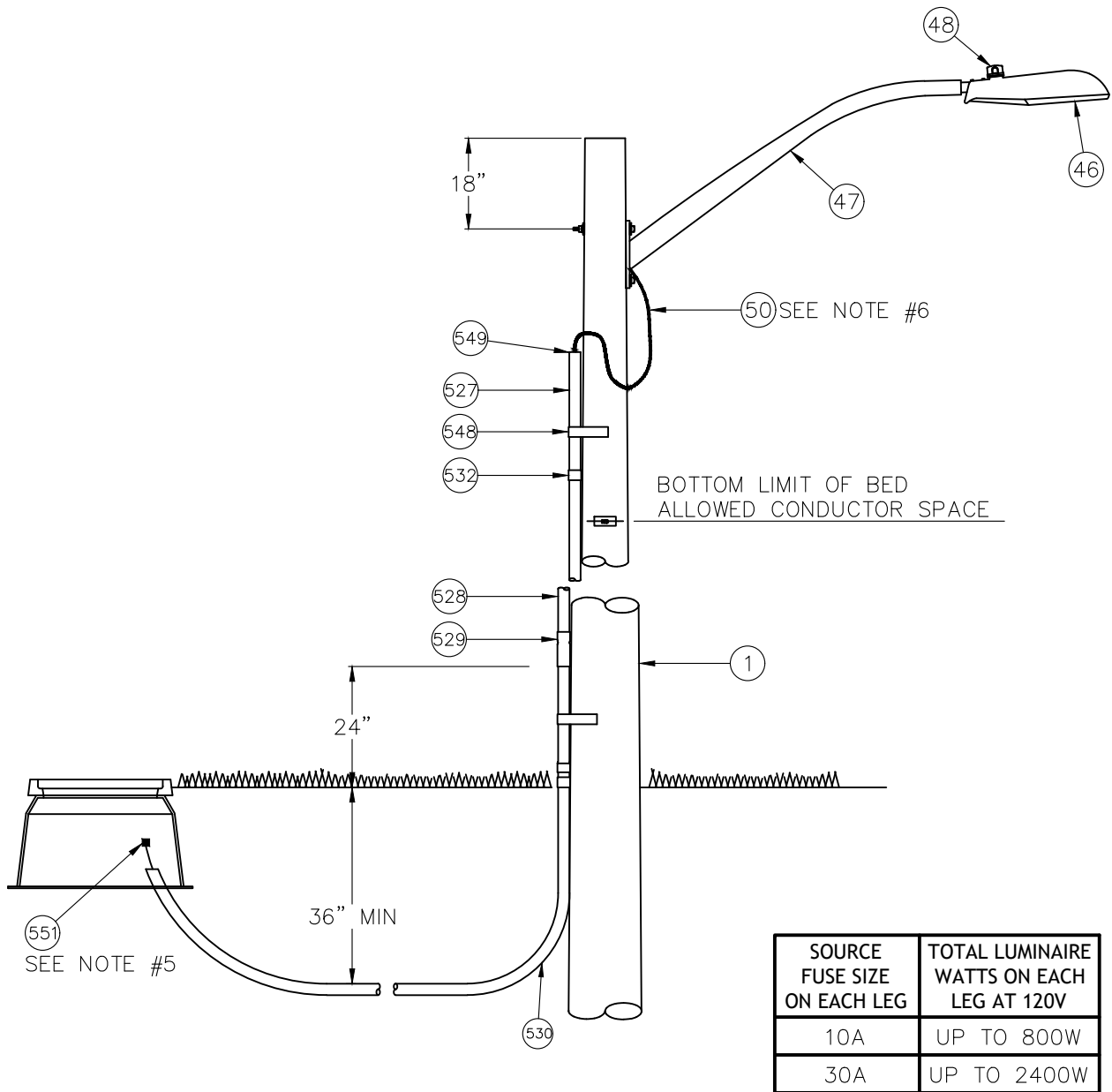
DISTRIBUTION STANDARDS

STREET LIGHTING
STANDARD SYSTEM

DATE: 04/14/20 DWG. NO.:

DWN BY: CC APP. BY:

SCALE: NONE SHEET 2 OF 2



SOURCE FUSE SIZE ON EACH LEG	TOTAL LUMINAIRE WATTS ON EACH LEG AT 120V
10A	UP TO 800W
30A	UP TO 2400W

NOTES:

1. LEAVE DRIP LOOP IN WIRE BETWEEN TOP OF RISER AND STREET LIGHT BRACKET.
2. IF 30A SOURCE FUSE IS USED, THEN 10AP FUSE IS TO BE USED AT EACH TAP POLE.
3. USE PIPE STRAPS ON POLE INSTALLED FOR STREET LIGHT ONLY. ON DISTRIBUTION POLES STANDOFF RISER FROM POLE.
4. NEMA APPROVED PVC SCHEDULE 80 CONDUIT SHALL BE USED TO 10' ABOVE GRADE. SCHEDULE 40 CONDUIT SHALL BE USED ABOVE 10'.
5. CONNECT GROUND WIRE TO NEUTRAL.
6. BOND BRACKET WITH GROUND WIRE.

BURLINGTON ELECTRIC DEPT.	
DISTRIBUTION STANDARDS	
STREET LIGHTING WOOD POLE WITH UNDERGROUND SERVICE	
DATE: 04/14/20	DWG. NO.: 220301
DWN BY: RG	APP. BY:
SCALE: NONE	SHEET 1 OF 1

MATERIAL LIST (STREET LIGHTING ONLY)

<u>ITEM</u>	<u>QUANTITY</u>	<u>DESCRIPTION</u>	<u>STOCK CODE</u>		
1	1	WOOD POLE	SEE	MATERIAL	LIST
9	AS REQUIRED	1/2" LAG BOLT & SPRING WASHER	-	GENERAL	STOCK
14	AS REQUIRED	5/8" MACHINE BOLT COMBO	-	GENERAL	STOCK
46	1	LIGHT FIXTURE - LED COBRAHEAD	SEE	MATERIAL	LIST
47	1	STREET LIGHT BRACKET - 6'	LIG	BKT	00020
48	1	PHOTO CONTROL	LIG	LED	00031
50	AS REQUIRED	#10-2 AWG COPPER WIRE, 600 V	ECW	MCC	00010
527	AS REQUIRED	CONDUIT, SCHEDULE 40 (SELECT SIZE)	DUC	PVC	-
528	10'	CONDUIT, SCHEDULE 80 (SELECT SIZE)	DUC	PVC	-
529	1	EXPANSION COUPLING (SELECT SIZE)	DUC	PFS	-
530	1	CONDUIT SWEEP, 36" RADIUS (SELECT SIZE)	DUC	PEL	-
532	AS REQUIRED	COUPLING, PVC	DUC	PCP	-
549	AS REQUIRED	AIR SEAL	DUC	SEA	00010
551	1	CONNECTOR, SUBMERSIBLE, WITH FUSE	LIG	FLS	00050

OPTIONAL EQUIPMENT

<u>ITEM</u>	<u>QUANTITY</u>	<u>DESCRIPTION</u>	<u>STOCK CODE</u>		
524	AS REQUIRED	CONDUIT STAND OFF BRACKET, 6"	PLH	BKT	00130
525	AS REQUIRED	STRUT	PLH	BAR	00010
526	AS REQUIRED	STRAP (SELECT SIZE)	DUC	STR	-

BURLINGTON ELECTRIC DEPT.

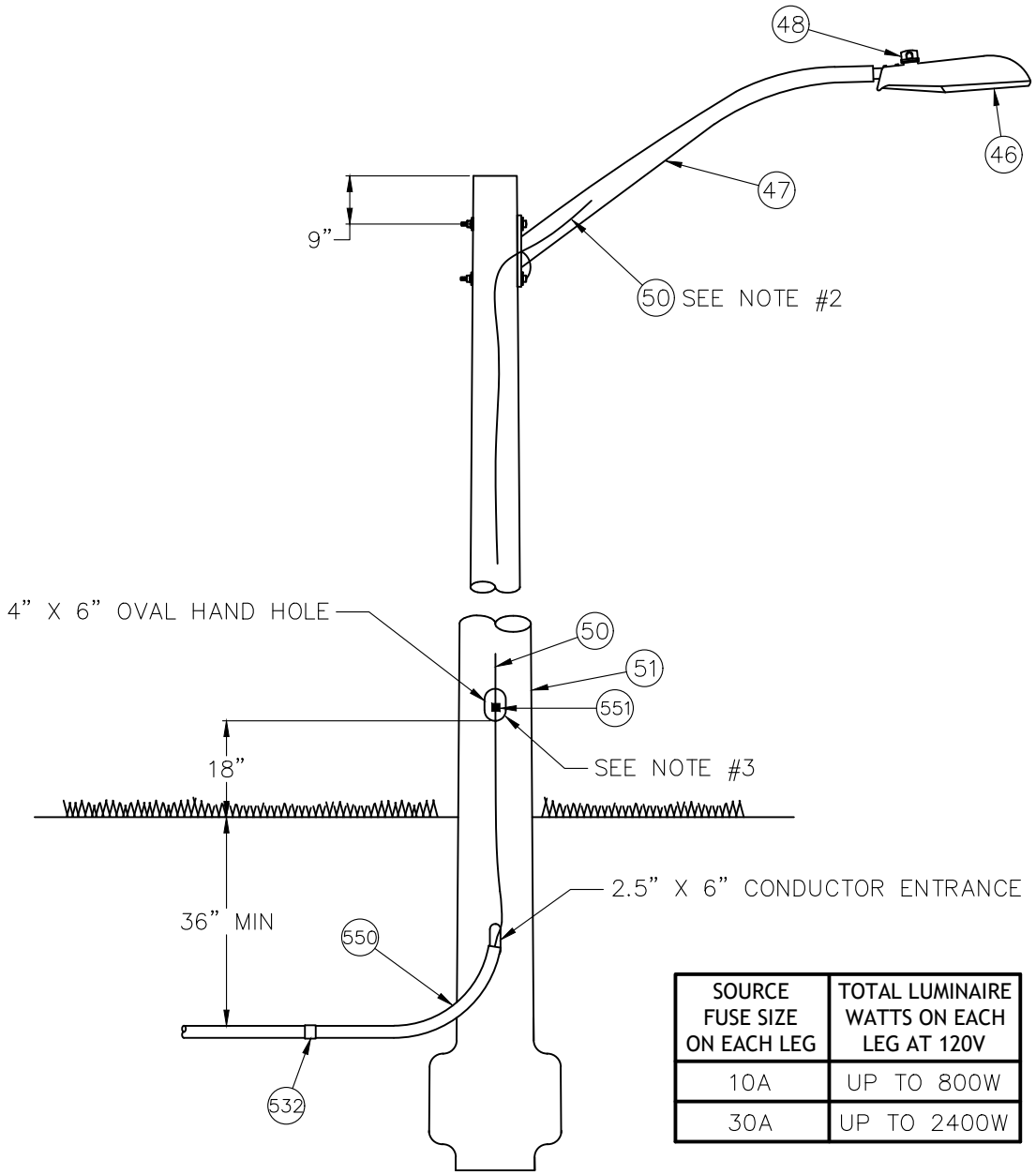
DISTRIBUTION STANDARDS

STREET LIGHTING WOOD POLE WITH
UNDERGROUND SERVICE

DATE: 04/14/20 DWG. NO.:

DWN BY: CC APP. BY:

SCALE: NONE SHEET 2 OF 2



SOURCE FUSE SIZE ON EACH LEG	TOTAL LUMINAIRE WATTS ON EACH LEG AT 120V
10A	UP TO 800W
30A	UP TO 2400W

NOTE:

1. IF 30A SOURCE FUSE IS USED, THEN 10Q FUSE IS TO BE USED AT EACH TAP POLE.
2. BOND BRACKET WITH GROUND WIRE.
3. SEE STANDARD 2210 FOR STREET LIGHT WIRING DIAGRAM.

**BURLINGTON ELECTRIC DEPT.
DISTRIBUTION STANDARDS
STREET LIGHTING
NON-WOODEN POLE WITH
COBRA HEAD LUMINAIRE**

DATE: 04/14/20	DWG. NO.: 220401
DWN BY: RG	APP. BY:
SCALE: NONE	SHEET 1 OF 1

MATERIAL LIST (STREET LIGHTING ONLY)

<u>ITEM</u>	<u>QUANTITY</u>	<u>DESCRIPTION</u>	<u>STOCK CODE</u>		
14	AS REQUIRED	5/8" MACHINE BOLT COMBO	-	GENERAL	STOCK
46	1	LIGHT FIXTURE - LED COBRAHEAD	SEE	MATERIAL	LIST
47	1	STREET LIGHT BRACKET - 6'	LIG	BKT	00020
48	1	PHOTO CONTROL	LIG	LED	00031
50	AS REQUIRED	#10-2 AWG COPPER WIRE, 600 V	ECW	MCC	00010
51	1	FIBERGLASS POLE - 35' - GRAY	POL	FIB	00020
532	AS REQUIRED	COUPLING, PVC	DUC	PCP	-
550	AS REQUIRED	CONDUIT, FLEXIBLE	DUC	FLX	-
551	1	CONNECTOR, SUBMERSIBLE, WITH FUSE	LIG	FLS	00050

BURLINGTON ELECTRIC DEPT.

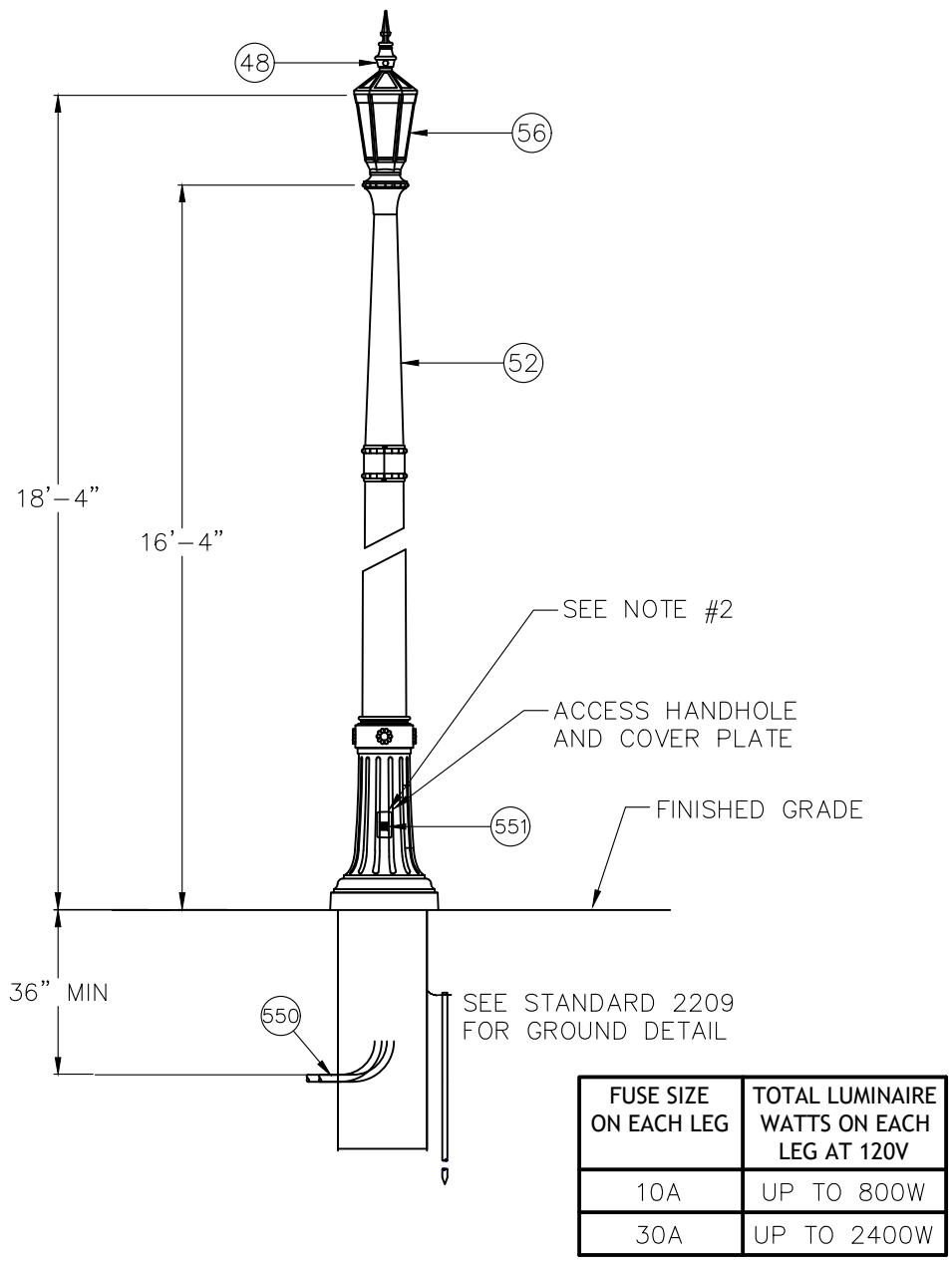
DISTRIBUTION STANDARDS

STREET LIGHTING NON-WOODEN POLE
WITH COBRAHEAD LUMINAIRE

DATE: 04/14/20 DWG. NO.:

DWN BY: CC APP. BY:

SCALE: NONE SHEET 2 OF 2



NOTES:

1. BOND POLE WITH GROUND WIRE.
2. SEE STANDARD 2210 FOR STREET LIGHT WIRING DIAGRAM.

**BURLINGTON ELECTRIC DEPT.
DISTRIBUTION STANDARDS
STREET LIGHTING
HISTORIC POLE & LUMINAIRE**

DATE: 05/08/15	DWG. NO.: 220501
DWN BY: RG	APP. BY:
SCALE: NONE	SHEET 1 OF 1

MATERIAL LIST (STREET LIGHTING ONLY)

<u>ITEM</u>	<u>QUANTITY</u>	<u>DESCRIPTION</u>	<u>STOCK CODE</u>		
48	1	PHOTO CONTROL	LIG	LED	00031
49	1	LAMP	SEE	MATERIAL	LIST
50	AS REQUIRED	#10-2 AWG COPPER WIRE, 600 V	ECW	MCC	00010
52	1	POLE, HISTORIC	POL	FIB	00170
56	1	LUMINAIRE, HISTORIC, L70 90W	LIG	LUM	00360
		LUMINAIRE, HISTORIC, L70 65W	LIG	LUM	00380
532	AS REQUIRED	COUPLING, PVC	DUC	PCP	-
550	AS REQUIRED	CONDUIT, FLEXIBLE	DUC	FLX	-
551	1	CONNECTOR, SUBMERSIBLE, WITH FUSE	LIG	FLS	00050

BURLINGTON ELECTRIC DEPT.

DISTRIBUTION STANDARDS

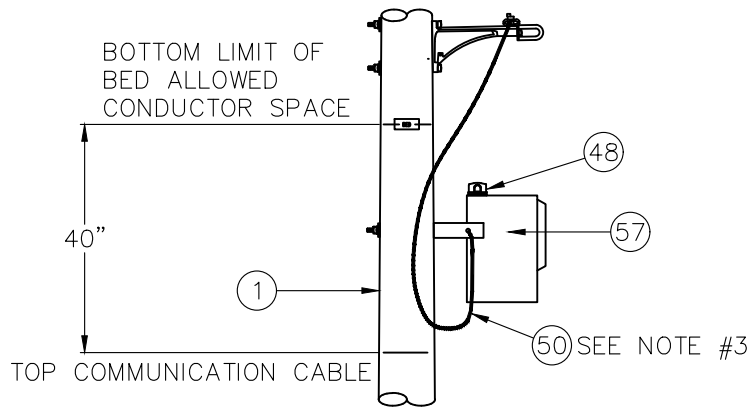
STREET LIGHTING HISTORIC
POLE AND LUMINAIRE

DATE: 05/08/15 | DWG. NO.:

DWN BY: CC | APP. BY:

SCALE: NONE | SHEET 2 OF 2

FLOOD LIGHT



NOTES:

- 1. LEASED LIGHTING MAY BE COBRA-HEAD LUMINAIRES OR FLOOD LIGHTS.
- 2. SEE BED STANDARD 2202 FOR COBRA-HEAD LUMINAIRE INSTRUCTIONS.
- 3. BOND BRACE WITH GROUND WIRE.

BURLINGTON ELECTRIC DEPT.	
DISTRIBUTION STANDARDS	
LEASED LIGHTING	

DATE: 04/09/15	DWG. NO.: 220601
DWN BY: RG	APP. BY:
SCALE: NONE	SHEET 1 OF 1

MATERIAL LIST (STREET LIGHTING ONLY)

<u>ITEM</u>	<u>QUANTITY</u>	<u>DESCRIPTION</u>	<u>STOCK CODE</u>
1	AS REQUIRED	WOOD POLE	SEE MATERIAL LIST
14	1	5/8" MACHINE BOLT COMBO	- GENERAL STOCK
48	1	PHOTO CONTROL	LIG LED 00031
49	1	LAMP	SEE MATERIAL LIST
50	AS REQUIRED	#10-2 AWG COPPER WIRE, 600 V	ECW MCC 00010
57	1	FLOOD LIGHT, 150W	LIG FLD 00040

OPTIONAL EQUIPMENT

<u>ITEM</u>	<u>QUANTITY</u>	<u>DESCRIPTION</u>	<u>STOCK CODE</u>
58	AS REQUIRED	VISOR, FLOOD LIGHT	- NON STOCK

BURLINGTON ELECTRIC DEPT.

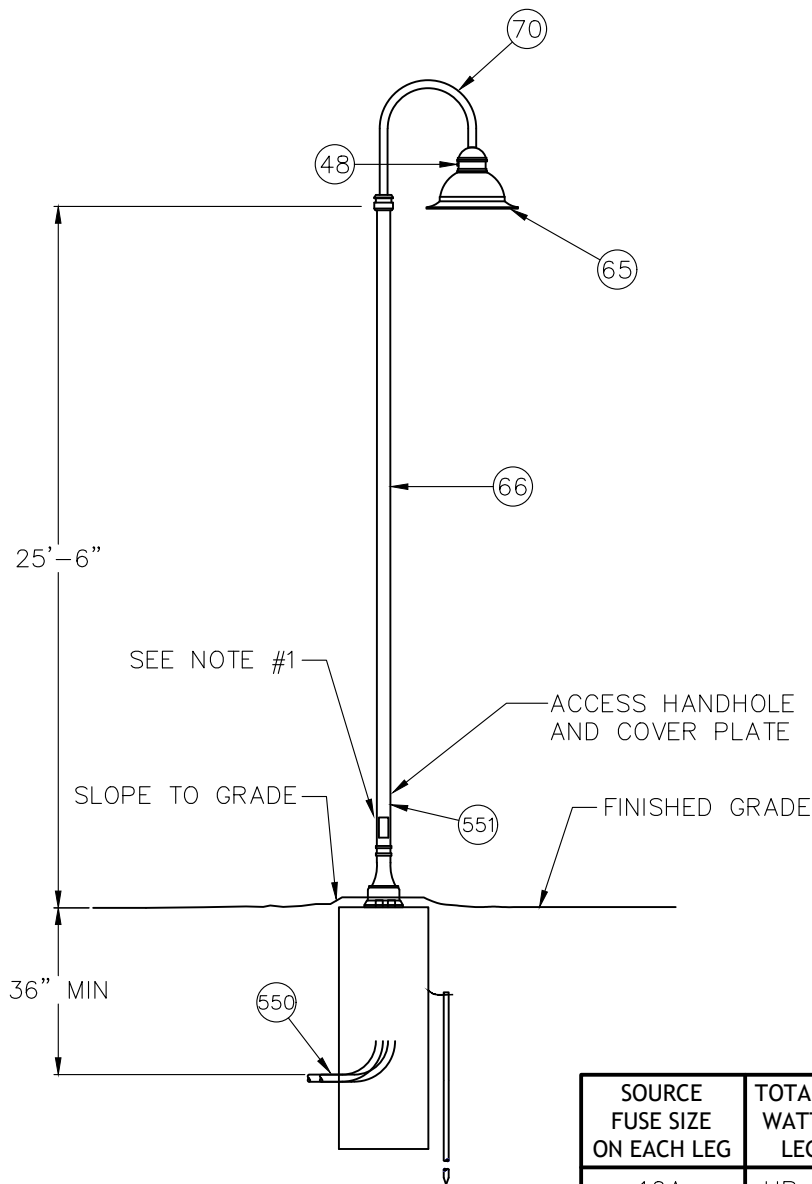
DISTRIBUTION STANDARDS

LEASED LIGHTING

DATE: 04/09/15 | DWG. NO.:

DWN BY: CC | APP. BY:

SCALE: NONE | SHEET 2 OF 2



SOURCE FUSE SIZE ON EACH LEG	TOTAL LUMINAIRE WATTS ON EACH LEG AT 120V
10A	UP TO 800W
30A	UP TO 2400W

NOTES:

1. SEE STANDARD 2210 FOR STREET LIGHT WIRING DIAGRAM.

BURLINGTON ELECTRIC DEPT.	
DISTRIBUTION STANDARDS	
STREET LIGHTING	
DOMUS FIXTURE	
DATE: 04/14/20	DWG. NO.: 220701
DWN BY: RG	APP. BY:
SCALE: NONE	SHEET 1 OF 1

MATERIAL LIST (STREET LIGHTING ONLY)

<u>ITEM</u>	<u>QUANTITY</u>	<u>DESCRIPTION</u>	<u>STOCK CODE</u>		
48	1	PHOTO CONTROL	LIG	LED	00031
50	AS REQUIRED	#10-2 AWG COPPER WIRE, 600 V	ECW	MCC	00010
65	1	DOMUS LED FXTURE	SEE	MATERIAL	LIST
66	1	25.5' STEEL POLE FOR DOMUS STREET LIGHTS	LIG	DTN	00050
70	1	DOMUS STREET LIGHT BRACKET, 5'	LIG	DTN	00090
532	AS REQUIRED	COUPLING, PVC	DUC	PCP	-
550	AS REQUIRED	CONDUIT, FLEXIBLE	DUC	FLX	-
551	1	CONNECTOR, SUBMERSIBLE, WITH FUSE	LIG	FLS	00050

BURLINGTON ELECTRIC DEPT.

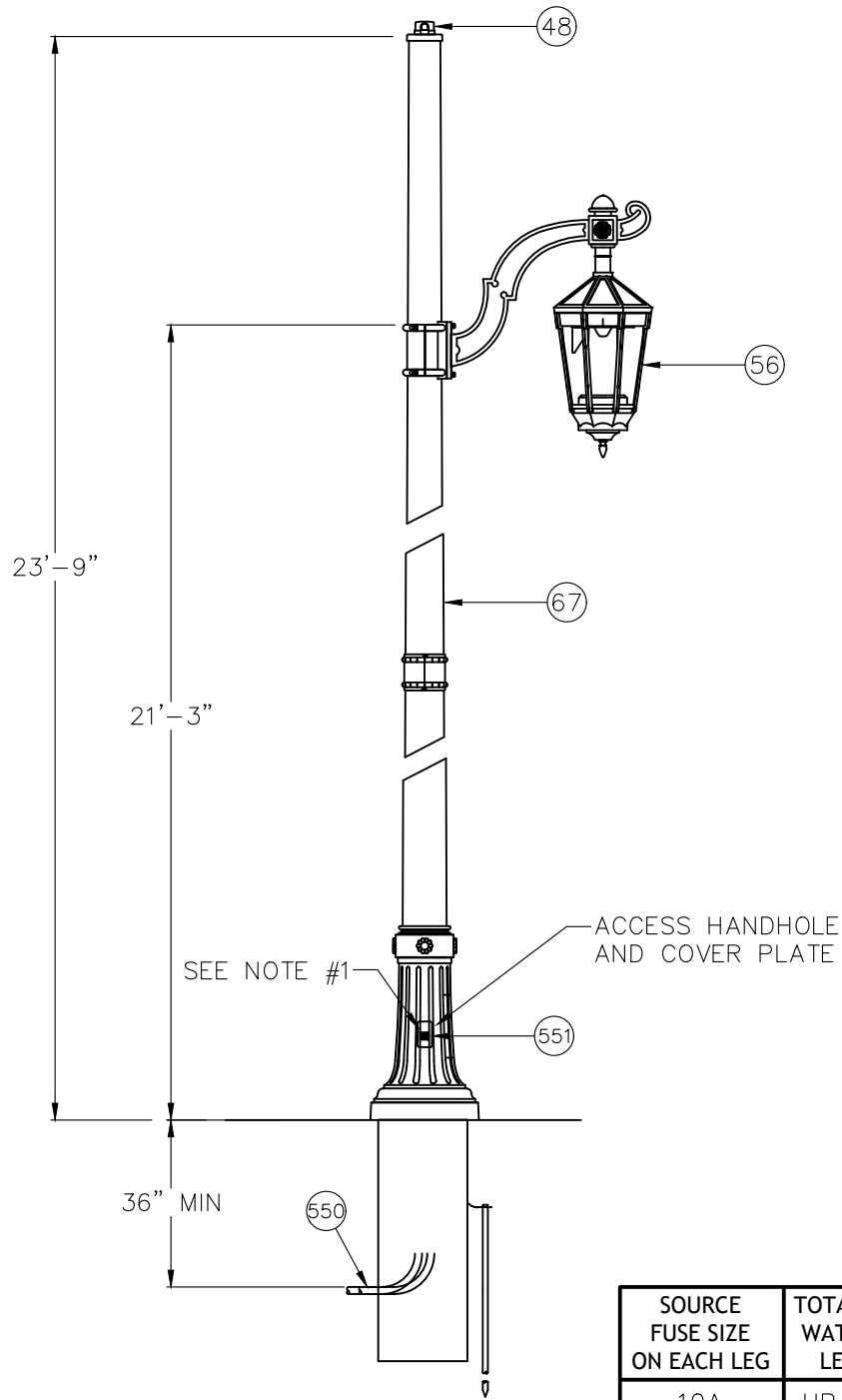
DISTRIBUTION STANDARDS

STREET LIGHTING DOMUS
FIXTURE

DATE: 04/14/20 DWG. NO.:

DWN BY: CC APP. BY:

SCALE: NONE SHEET 2 OF 2



SOURCE FUSE SIZE ON EACH LEG	TOTAL LUMINAIRE WATTS ON EACH LEG AT 120V
10A	UP TO 800W
30A	UP TO 2400W

NOTES:

1. SEE STANDARD 2210 FOR STREET LIGHT WIRING DIAGRAM.

BURLINGTON ELECTRIC DEPT.	
DISTRIBUTION STANDARDS	
UPPER MAIN ST LIGHTING	
HISTORIC POLE & LUMINAIRE	
DATE: 04/14/20	DWG. NO.: 220801
DWN BY: RG	APP. BY:
SCALE: NONE	SHEET 1 OF 1

MATERIAL LIST (STREET LIGHTING ONLY)

<u>ITEM</u>	<u>QUANTITY</u>	<u>DESCRIPTION</u>	<u>STOCK CODE</u>		
48	1	PHOTO CONTROL	LIG	LED	00031
49	1	LAMP	SEE	MATERIAL	LIST
50	AS REQUIRED	#10-2 AWG COPPER WIRE, 600 V	ECW	MCC	00010
67	1	23' 9" ALUMINUM HISTORIC STREET LIGHT POLE	POL	ALU	00070
56	1	LUMINAIRE, HISTORIC, L70 90W	LIG	LUM	00360
532	AS REQUIRED	COUPLING, PVC	DUC	PCP	-
550	AS REQUIRED	CONDUIT, FLEXIBLE	DUC	FLX	-
551	1	CONNECTOR, SUBMERSIBLE, WITH FUSE	LIG	FLS	00050

BURLINGTON ELECTRIC DEPT.

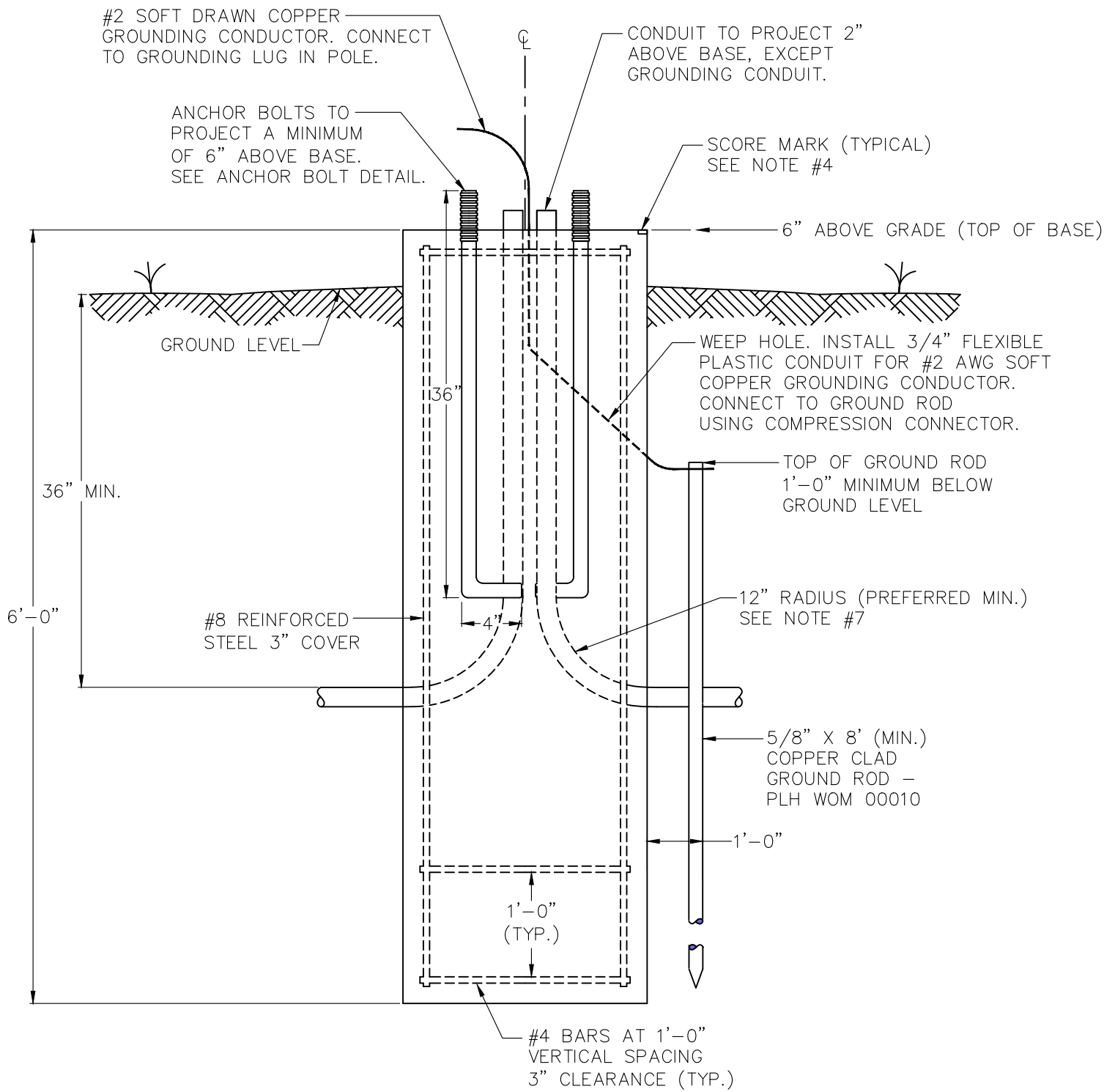
DISTRIBUTION STANDARDS

UPPER MAIN STREET LIGHTING
HISTORIC POLE & LUMINAIRE

DATE: 04/14/20 DWG. NO.:

DWN BY: CC APP. BY:

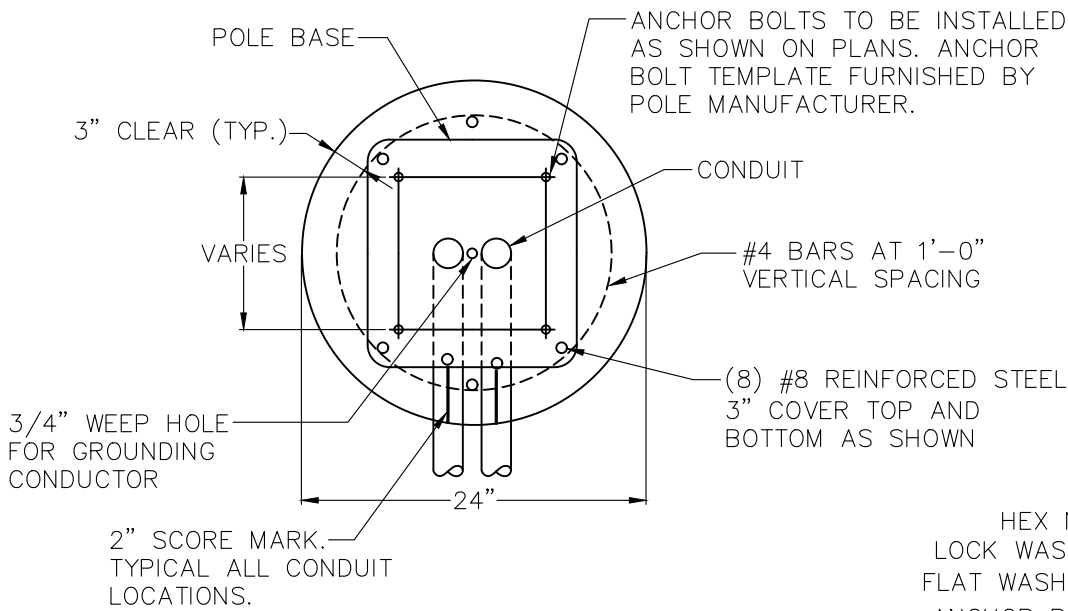
SCALE: NONE SHEET 2 OF 2



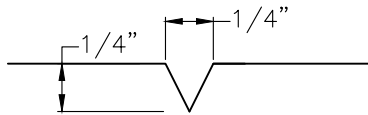
ELEVATION

BURLINGTON ELECTRIC DEPT.
DISTRIBUTION STANDARDS
STREET LIGHTING
CONCRETE BASE DETAIL

DATE: 07/22/14	DWG. NO.: 220901
DWN BY: RG	APP. BY:
SCALE: NONE	SHEET 1 OF 2

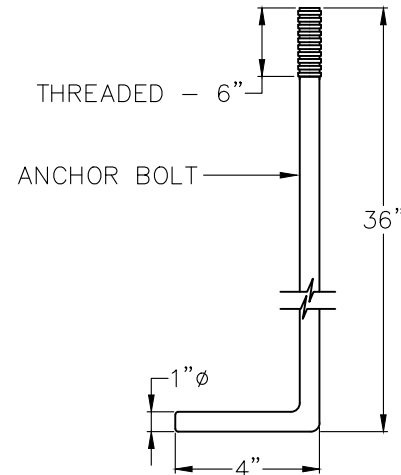


PLAN VIEW



SCORE MARK DETAIL

- HEX NUT
- LOCK WASHER
- FLAT WASHERS
- ANCHOR BASE
- FLAT WASHERS
- HEX NUT



ANCHOR BOLT ASSEMBLY DETAIL

STOCK CODE NUMBERS

1. ANCHOR BOLT: LIG DTN 00100
2. ANCHOR BOLT TEMPLATE: LIG DTN 00110

CONCRETE BASE AND GENERAL NOTES

1. ALL CONCRETE BASES TO BE CONCRETE CLASS B AND SHALL HAVE A SMOOTH LEVEL TOP SURFACE FINISHED WITH A 1/2" RADIUS EDGING TOOL.
2. ALL REINFORCING STEEL TO CONFORM TO THE REQUIREMENTS FOR "REINFORCING STEEL".
3. TEMPLATE FOR STAINLESS STEEL ANCHOR BOLTS, NUTS, AND WASHERS TO BE OBTAINED PRIOR TO CONSTRUCTION OF BASES FROM POLE MANUFACTURER.
4. SCORE TOP OF CONCRETE BASE TO SHOW LOCATION OF CONDUIT(S).
5. ALL EXPOSED METAL HARDWARE SHALL BE GALVANIZED OR STAINLESS STEEL.
6. ELECTRICAL CONDUIT IN THE CONCRETE BASE TO BE 2" I.D., SCHEDULE 40 PVC.
7. THE MINIMUM RADIUS FOR RIGID NONMETALLIC ELECTRICAL CONDUIT SHALL BE 6 TIMES THE INSIDE DIAMETER OF THE CONDUIT.

BURLINGTON ELECTRIC DEPT.

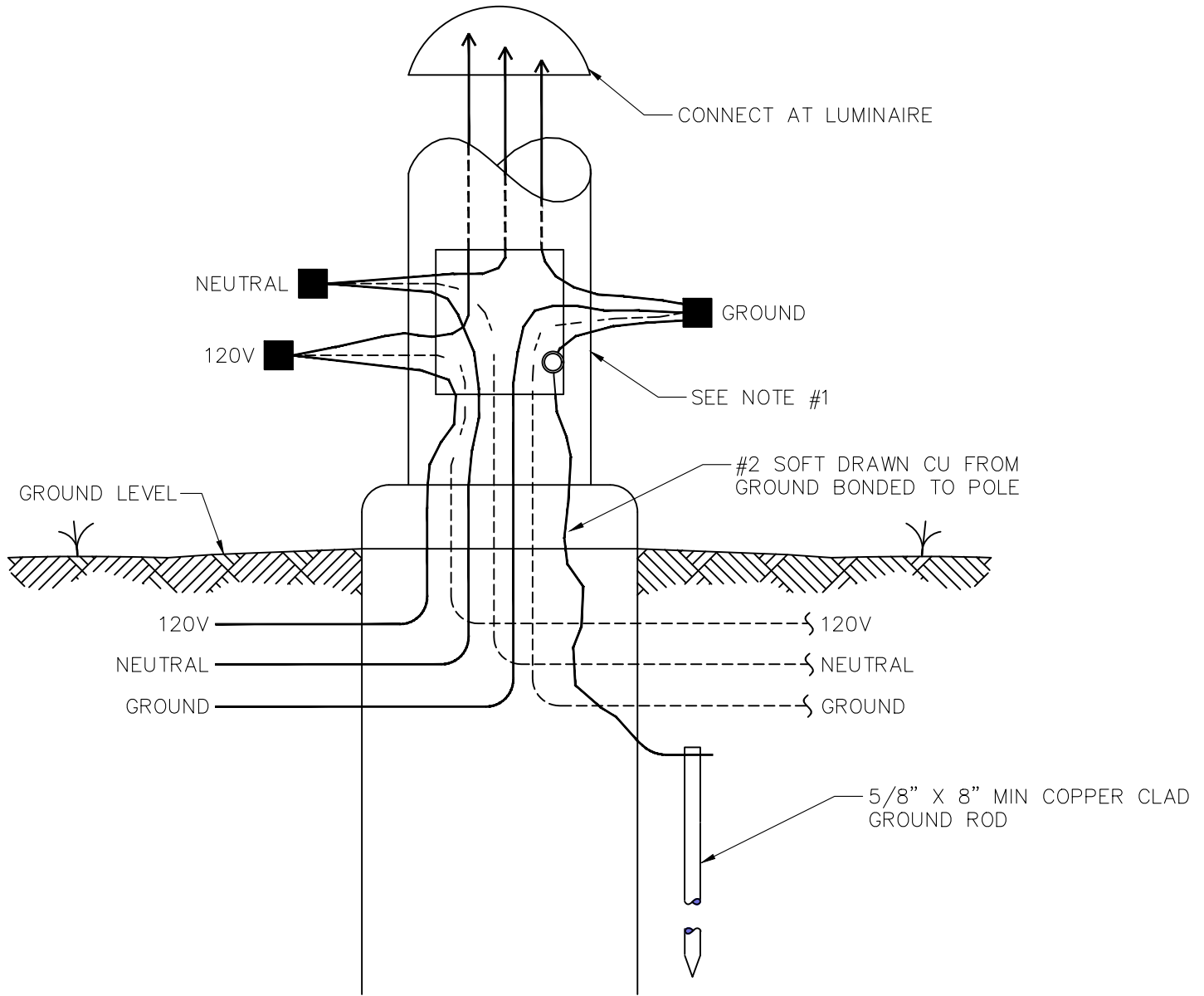
DISTRIBUTION STANDARDS

**STREET LIGHTING
CONCRETE BASE DETAIL**

DATE: 07/22/14 DWG. NO.: 220902

DWN BY: RG APP. BY:

SCALE: NONE SHEET 2 OF 2



NOTES:

- 1. ALL METAL POLES MUST BE BONDED TO SYSTEM GROUND AND GROUND ROD.

BURLINGTON ELECTRIC DEPT.	
DISTRIBUTION STANDARDS	
STREET LIGHT WIRING DIAGRAM	
DATE: 05/14/15	DWG. NO.: 221001
DWN BY: RG	APP. BY:
SCALE: NONE	SHEET 1 OF 1